

## Product datasheet for **TA890128M**

### IKK beta (IKBKB) Rabbit Polyclonal Antibody

#### Product data:

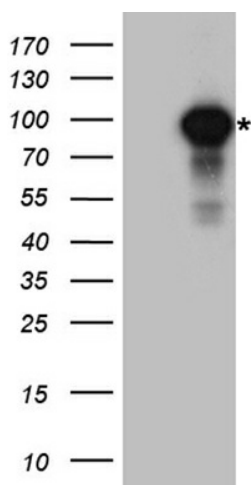
Product Type:	Primary Antibodies
Applications:	WB
Recommended Dilution:	WB: 1:500~2000
Reactivity:	Human, Rat, Mouse
Host:	Rabbit
Isotype:	IgG
Clonality:	Polyclonal
Immunogen:	Recombinant protein of human IKBKB
Formulation:	PBS with 0.02% sodium azide, 50% glycerol, pH7.3
Concentration:	0.58 mg/ml
Purification:	Purified from the immunized serum by affinity chromatography (Protein A/G)
Conjugation:	Unconjugated
Storage:	Store at -20°C as received.
Stability:	Stable for 12 months from date of receipt.
Predicted Protein Size:	86.4 kDa
Gene Name:	inhibitor of kappa light polypeptide gene enhancer in B-cells, kinase beta
Database Link:	<a href="#">NP_001547</a> <a href="#">Entrez Gene 16150 Mouse</a> <a href="#">Entrez Gene 84351 Rat</a> <a href="#">Entrez Gene 3551 Human</a> <a href="#">O14920</a>
Synonyms:	IKK-beta; IKK2; IKKB; IMD15; NFKB1KB
Protein Families:	Druggable Genome, Protein Kinase, Transcription Factors



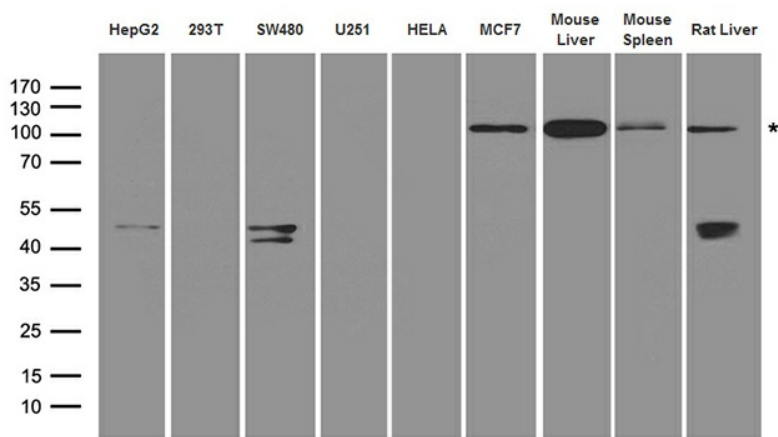
[View online »](#)

**Protein Pathways:**

Acute myeloid leukemia, Adipocytokine signaling pathway, Apoptosis, B cell receptor signaling pathway, Chemokine signaling pathway, Chronic myeloid leukemia, Cytosolic DNA-sensing pathway, Epithelial cell signaling in Helicobacter pylori infection, Insulin signaling pathway, MAPK signaling pathway, Neurotrophin signaling pathway, NOD-like receptor signaling pathway, Pancreatic cancer, Pathways in cancer, Prostate cancer, RIG-I-like receptor signaling pathway, Small cell lung cancer, T cell receptor signaling pathway, Toll-like receptor signaling pathway, Type II diabetes mellitus

**Product images:**


HEK293T cells were transfected with the pCMV6-ENTRY control (Cat# [PS100001], Left lane) or pCMV6-ENTRY IKBKB (Cat# [RC219154], Right lane) cDNA for 48 hrs and lysed. Equivalent amounts of cell lysates (5 ug per lane) were separated by SDS-PAGE and immunoblotted with anti-*IKBKB* antibody (Cat# [TA890128]). Positive lysates [LY419865] (100ug) and [LC419865] (20ug) can be purchased separately from OriGene.



Western blot analysis of extracts (35ug) from different cell lines and tissues by using anti-*IKBKB* rabbit polyclonal antibody.