

## Product datasheet for **TA890128**

### IKK beta (IKBKB) Rabbit Polyclonal Antibody

#### Product data:

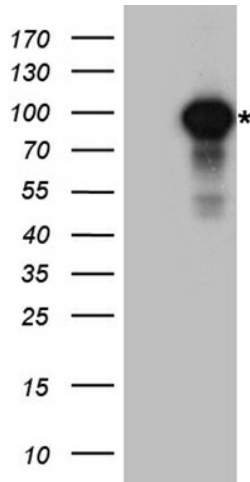
|                         |   |
|-------------------------|---|
| Product Type:           | Primary Antibodies  |
| Applications:           | WB  |
| Recommended Dilution:   | WB: 1:500~2000  |
| Reactivity:             | Human, Rat, Mouse   |
| Host:                   | Rabbit  |
| Isotype:                | IgG   |
| Clonality:              | Polyclonal  |
| Immunogen:              | Recombinant protein of human IKBKB  |
| Formulation:            | PBS with 0.02% sodium azide, 50% glycerol, pH7.3  |
| Concentration:          | 0.58 mg/ml  |
| Purification:           | Purified from the immunized serum by affinity chromatography (Protein A/G)  |
| Conjugation:            | Unconjugated  |
| Storage:                | Store at -20°C as received.   |
| Stability:              | Stable for 12 months from date of receipt.  |
| Predicted Protein Size: | 86.4 kDa  |
| Gene Name:              | inhibitor of kappa light polypeptide gene enhancer in B-cells, kinase beta  |
| Database Link:          | <a href="#">NP_001547</a><br><a href="#">Entrez Gene 16150 Mouse</a> <a href="#">Entrez Gene 84351 Rat</a> <a href="#">Entrez Gene 3551 Human</a><br><a href="#">O14920</a> |
| Synonyms:               | IKK-beta; IKK2; IKKB; IMD15; NFKBIKB  |
| Protein Families:       | Druggable Genome, Protein Kinase, Transcription Factors   |



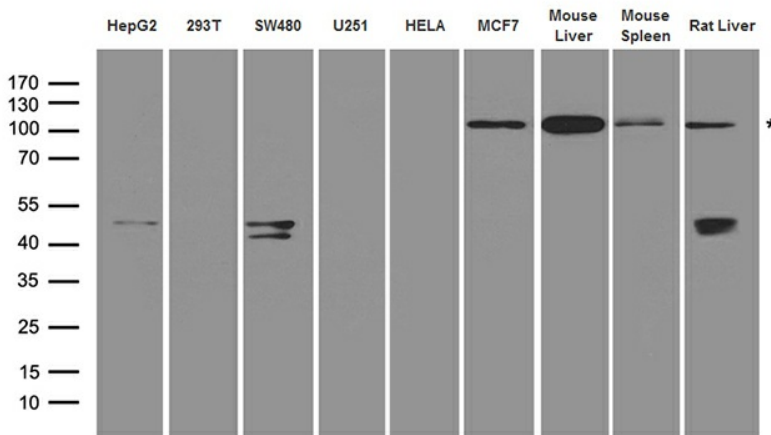
[View online »](#)

**Protein Pathways:**

Acute myeloid leukemia, Adipocytokine signaling pathway, Apoptosis, B cell receptor signaling pathway, Chemokine signaling pathway, Chronic myeloid leukemia, Cytosolic DNA-sensing pathway, Epithelial cell signaling in Helicobacter pylori infection, Insulin signaling pathway, MAPK signaling pathway, Neurotrophin signaling pathway, NOD-like receptor signaling pathway, Pancreatic cancer, Pathways in cancer, Prostate cancer, RIG-I-like receptor signaling pathway, Small cell lung cancer, T cell receptor signaling pathway, Toll-like receptor signaling pathway, Type II diabetes mellitus

**Product images:**


HEK293T cells were transfected with the pCMV6-ENTRY control (Cat# [PS100001], Left lane) or pCMV6-ENTRY IKKBK (Cat# [RC219154], Right lane) cDNA for 48 hrs and lysed. Equivalent amounts of cell lysates (5 ug per lane) were separated by SDS-PAGE and immunoblotted with anti-IKKBK antibody (Cat# TA890128). Positive lysates [LY419865] (100ug) and [LC419865] (20ug) can be purchased separately from OriGene.



Western blot analysis of extracts (35ug) from different cell lines and tissues by using anti-IKKBK rabbit polyclonal antibody.