

## Product datasheet for **TA890127**

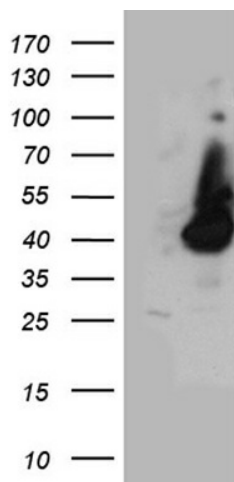
### HPR Rabbit Polyclonal Antibody

#### Product data:

Product Type:	Primary Antibodies
Applications:	WB
Recommended Dilution:	WB: 1:500~2000
Reactivity:	Human
Host:	Rabbit
Isotype:	IgG
Clonality:	Polyclonal
Immunogen:	Recombinant protein of human HPR
Formulation:	PBS with 0.02% sodium azide, 50% glycerol, pH7.3
Concentration:	3.09 mg/ml
Purification:	Purified from the immunized serum by affinity chromatography (Protein A/G)
Conjugation:	Unconjugated
Storage:	Store at -20°C as received.
Stability:	Stable for 12 months from date of receipt.
Predicted Protein Size:	38.8 kDa
Gene Name:	haptoglobin-related protein
Database Link:	<a href="#">NP_066275</a> <a href="#">Entrez Gene 3250 Human</a> <a href="#">P00739</a>
Synonyms:	A-259H10.2; HP
Protein Families:	Druggable Genome, Protease, Secreted Protein



[View online »](#)

**Product images:**

HEK293T cells were transfected with the pCMV6-ENTRY control (Cat# [PS100001], Left lane) or pCMV6-ENTRY HPR (Cat# [RC218300], Right lane) cDNA for 48 hrs and lysed. Equivalent amounts of cell lysates (5 ug per lane) were separated by SDS-PAGE and immunoblotted with anti-HPR antibody (Cat# TA890127). Positive lysates [LY412112] (100ug) and [LC412112] (20ug) can be purchased separately from OriGene.