

## Product datasheet for **TA890126S**

### **HIRA Rabbit Polyclonal Antibody**

#### **Product data:**

Product Type:	Primary Antibodies
Applications:	WB
Recommended Dilution:	WB: 1:500~2000
Reactivity:	Human, Mouse, Rat
Host:	Rabbit
Isotype:	IgG
Clonality:	Polyclonal
Immunogen:	Recombinant protein of human HIRA
Formulation:	PBS with 0.02% sodium azide, 50% glycerol, pH7.3
Concentration:	1.65 mg/ml
Purification:	Purified from the immunized serum by affinity chromatography (Protein A/G)
Conjugation:	Unconjugated
Storage:	Store at -20°C as received.
Stability:	Stable for 12 months from date of receipt.
Predicted Protein Size:	111.7 kDa
Gene Name:	histone cell cycle regulator
Database Link:	<a href="#">NP_003316</a> <a href="#">Entrez Gene 15260 MouseEntrez Gene 363849 RatEntrez Gene 7290 Human P54198</a>

**Background:** This gene encodes a histone chaperone that preferentially places the variant histone H3.3 in nucleosomes. Orthologs of this gene in yeast, flies, and plants are necessary for the formation of transcriptionally silent heterochromatin. This gene plays an important role in the formation of the senescence-associated heterochromatin foci. These foci likely mediate the irreversible cell cycle changes that occur in senescent cells. It is considered the primary candidate gene in some haploinsufficiency syndromes such as DiGeorge syndrome, and insufficient production of the gene may disrupt normal embryonic development. [provided by RefSeq, Jul 2008]

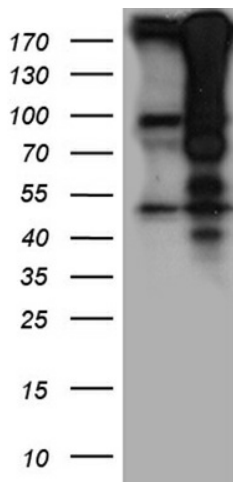
**Synonyms:** DGCR1; TUP1; TUPLE1



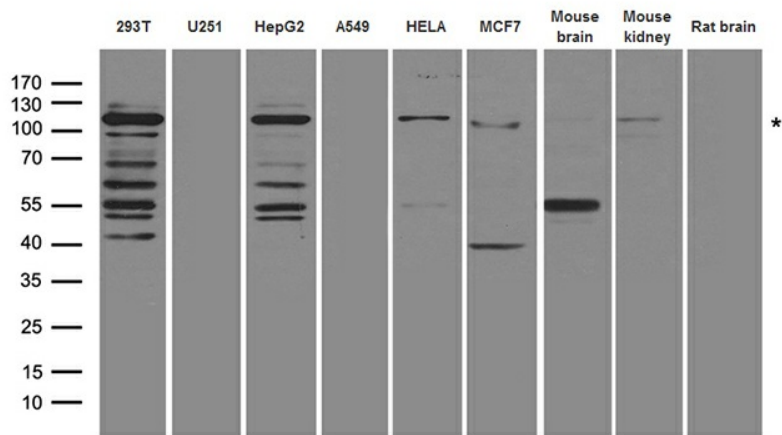
[View online »](#)

Protein Families: Transcription Factors

**Product images:**



HEK293T cells were transfected with the pCMV6-ENTRY control (Cat# [PS100001], Left lane) or pCMV6-ENTRY HIRA (Cat# [RC208049], Right lane) cDNA for 48 hrs and lysed. Equivalent amounts of cell lysates (5 ug per lane) were separated by SDS-PAGE and immunoblotted with anti-HIRA rabbit polyclonal antibody (Cat# [TA890126]).



Western blot analysis of extracts (35ug) from different cell lines and tissues by using anti-HIRA rabbit polyclonal antibody.