

Product datasheet for **TA890123M**

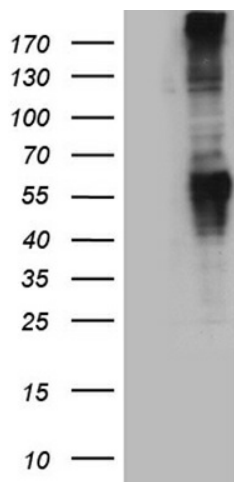
Metabotropic Glutamate Receptor 5 (GRM5) Rabbit Polyclonal Antibody

Product data:

Product Type:	Primary Antibodies
Applications:	WB
Recommended Dilution:	WB: 1:500~2000
Reactivity:	Human, Mouse, Rat
Host:	Rabbit
Isotype:	IgG
Clonality:	Polyclonal
Immunogen:	Recombinant protein of human GRM5
Formulation:	PBS with 0.02% sodium azide, 50% glycerol, pH7.3
Concentration:	4.51 mg/ml
Purification:	Purified from the immunized serum by affinity chromatography (Protein A/G)
Conjugation:	Unconjugated
Storage:	Store at -20°C as received.
Stability:	Stable for 12 months from date of receipt.
Predicted Protein Size:	132.47 kDa
Gene Name:	glutamate metabotropic receptor 5
Database Link:	NP_001137303 Entrez Gene 24418 Rat Entrez Gene 108071 Mouse Entrez Gene 2915 Human P41594
Synonyms:	GPRC1E; mGlu5; MGLUR5; PPP1R86
Protein Families:	Druggable Genome, GPCR, Transmembrane
Protein Pathways:	Calcium signaling pathway, Gap junction, Huntington's disease, Long-term depression, Long-term potentiation, Neuroactive ligand-receptor interaction



[View online »](#)

Product images:


HEK293T cells were transfected with the pCMV6-ENTRY control (Cat# [PS100001], Left lane) or pCMV6-ENTRY GRM5 (Cat# [RC227736], Right lane) cDNA for 48 hrs and lysed. Equivalent amounts of cell lysates (5 ug per lane) were separated by SDS-PAGE and immunoblotted with anti-GRM5 antibody (Cat# [TA890123]). Positive lysates [LY428374] (100ug) and [LC428374] (20ug) can be purchased separately from OriGene.