

## Product datasheet for **TA890117S**

### Eph receptor A4 (EPHA4) Rabbit Polyclonal Antibody

#### Product data:

Product Type:	Primary Antibodies
Applications:	WB
Recommended Dilution:	WB: 1:500~2000
Reactivity:	Human, Rat, Mouse
Host:	Rabbit
Isotype:	IgG
Clonality:	Polyclonal
Immunogen:	Recombinant protein of human EPHA4
Formulation:	PBS with 0.02% sodium azide, 50% glycerol, pH7.3
Concentration:	2.45 mg/ml
Purification:	Purified from the immunized serum by affinity chromatography (Protein A/G)
Conjugation:	Unconjugated
Storage:	Store at -20°C as received.
Stability:	Stable for 12 months from date of receipt.
Predicted Protein Size:	109.7 kDa
Gene Name:	EPH receptor A4
Database Link:	<a href="#">NP_004429</a> <a href="#">Entrez Gene 13838 Mouse</a> <a href="#">Entrez Gene 316539 Rat</a> <a href="#">Entrez Gene 2043 Human</a> <a href="#">P54764</a>

**Background:** This gene belongs to the ephrin receptor subfamily of the protein-tyrosine kinase family. EPH and EPH-related receptors have been implicated in mediating developmental events, particularly in the nervous system. Receptors in the EPH subfamily typically have a single kinase domain and an extracellular region containing a Cys-rich domain and 2 fibronectin type III repeats. The ephrin receptors are divided into 2 groups based on the similarity of their extracellular domain sequences and their affinities for binding ephrin-A and ephrin-B ligands. Multiple transcript variants encoding different isoforms have been found for this gene. [provided by RefSeq, Jan 2015]

**Synonyms:** HEK8; SEK; TYRO1

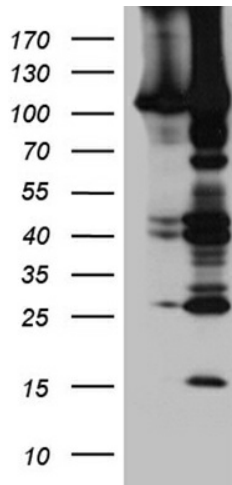


[View online »](#)

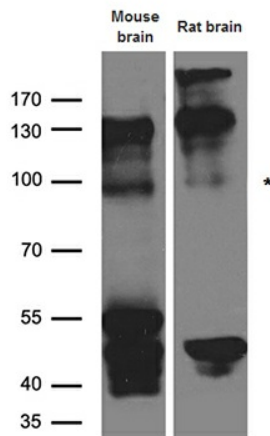
**Protein Families:** Druggable Genome, Protein Kinase, Transmembrane

**Protein Pathways:** Axon guidance

**Product images:**



HEK293T cells were transfected with the pCMV6-ENTRY control (Cat# [PS100001], Left lane) or pCMV6-ENTRY EPHA4 (Cat# [RC211230], Right lane) cDNA for 48 hrs and lysed. Equivalent amounts of cell lysates (5 ug per lane) were separated by SDS-PAGE and immunoblotted with anti-EPHA4 rabbit polyclonal antibody (Cat# [TA890117]).



Western blot analysis of extracts (35ug) from different cell lines and tissues by using anti-EPHA4 rabbit polyclonal antibody.