

## Product datasheet for **TA890116M**

### Eph receptor A3 (EPHA3) Rabbit Polyclonal Antibody

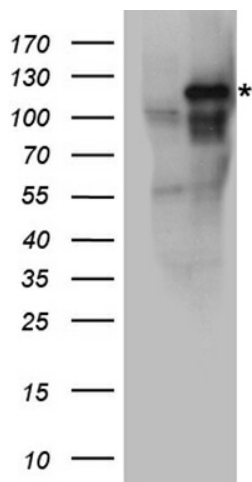
#### Product data:

Product Type:	Primary Antibodies
Applications:	WB
Recommended Dilution:	WB: 1:500~2000
Reactivity:	Human, Rat, Mouse
Host:	Rabbit
Isotype:	IgG
Clonality:	Polyclonal
Immunogen:	Recombinant protein of human EPHA3
Formulation:	PBS with 0.02% sodium azide, 50% glycerol, pH7.3
Concentration:	2.83 mg/ml
Purification:	Purified from the immunized serum by affinity chromatography (Protein A/G)
Conjugation:	Unconjugated
Storage:	Store at -20°C as received.
Stability:	Stable for 12 months from date of receipt.
Predicted Protein Size:	110 kDa
Gene Name:	EPH receptor A3
Database Link:	<a href="#">NP_005224</a> <a href="#">Entrez Gene 13837 Mouse</a> <a href="#">Entrez Gene 29210 Rat</a> <a href="#">Entrez Gene 2042 Human</a> <a href="#">P29320</a>
Synonyms:	EK4; ETK; ETK1; HEK; HEK4; TYRO4
Protein Families:	Druggable Genome, Protein Kinase, Secreted Protein, Transmembrane
Protein Pathways:	Axon guidance

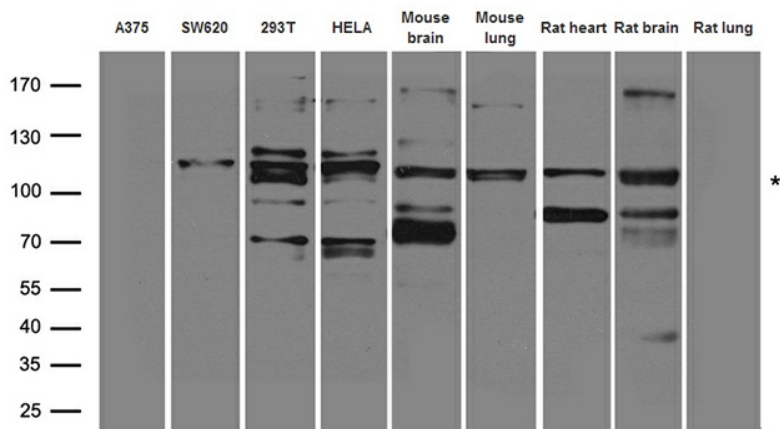


[View online »](#)

## Product images:



HEK293T cells were transfected with the pCMV6-ENTRY control (Cat# [PS100001], Left lane) or pCMV6-ENTRY EPHA3 (Cat# [RC209191], Right lane) cDNA for 48 hrs and lysed. Equivalent amounts of cell lysates (5 ug per lane) were separated by SDS-PAGE and immunoblotted with anti-EPHA3 (Cat# [TA890116]). Positive lysates [LY417428] (100ug) and [LC417428] (20ug) can be purchased separately from OriGene.



Western blot analysis of extracts (35ug) from different cell lines and tissues by using anti-EPHA3 rabbit polyclonal antibody.