

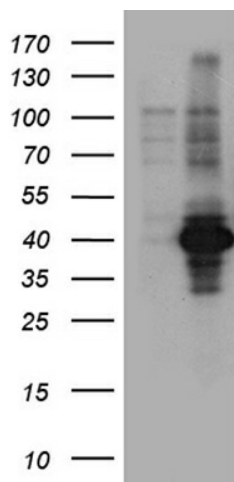
## Product datasheet for **TA890115M**

### EME2 Rabbit Polyclonal Antibody

#### Product data:

Product Type:	Primary Antibodies
Applications:	WB
Recommended Dilution:	WB: 1:500~2000
Reactivity:	Human
Host:	Rabbit
Isotype:	IgG
Clonality:	Polyclonal
Immunogen:	Recombinant protein of human EME2
Formulation:	PBS with 0.02% sodium azide, 50% glycerol, pH7.3
Concentration:	3.93 mg/ml
Purification:	Purified from the immunized serum by affinity chromatography (Protein A/G)
Conjugation:	Unconjugated
Storage:	Store at -20°C as received.
Stability:	Stable for 12 months from date of receipt.
Predicted Protein Size:	48.2 kDa
Gene Name:	essential meiotic structure-specific endonuclease subunit 2
Database Link:	<a href="#">NP_001010865</a> <a href="#">Entrez Gene 197342 Human</a> <a href="#">A4GXA9</a>
Background:	EME2 forms a heterodimer with MUS81 (MIM 606591) that functions as an XPF (MIM 278760)-type flap/fork endonuclease in DNA repair (Ciccia et al., 2007 [PubMed 17289582]). [supplied by OMIM, Mar 2008]
Synonyms:	FLJ00151; gs125; SLX2B

[View online »](#)

**Product images:**

HEK293T cells were transfected with the pCMV6-ENTRY control (Cat# [PS100001], Left lane) or pCMV6-ENTRY EME2 (Cat# [RC233925], Right lane) cDNA for 48 hrs and lysed. Equivalent amounts of cell lysates (5 ug per lane) were separated by SDS-PAGE and immunoblotted with anti-EME2 antibody (Cat# [TA890115]). Positive lysates [LY423193] (100ug) and [LC423193] (20ug) can be purchased separately from OriGene.