

## Product datasheet for **TA890114M**

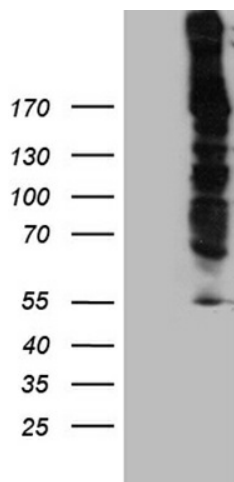
### Desmoplakin (DSP) Rabbit Polyclonal Antibody

#### Product data:

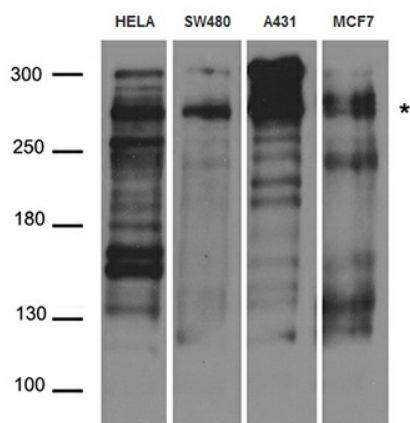
Product Type:	Primary Antibodies
Applications:	WB
Recommended Dilution:	WB: 1:500~2000
Reactivity:	Human, Mouse, Rat
Host:	Rabbit
Isotype:	IgG
Clonality:	Polyclonal
Immunogen:	Recombinant protein of human DSP
Formulation:	PBS with 0.02% sodium azide, 50% glycerol, pH7.3
Concentration:	2.72 mg/ml
Purification:	Purified from the immunized serum by affinity chromatography (Protein A/G)
Conjugation:	Unconjugated
Storage:	Store at -20°C as received.
Stability:	Stable for 12 months from date of receipt.
Predicted Protein Size:	259.9 kDa
Gene Name:	desmoplakin
Database Link:	<a href="#">NP_001008844</a> <a href="#">Entrez Gene 306871 RatEntrez Gene 1832 Human P15924</a>
Background:	Major high molecular weight protein of desmosomes. Involved in the organization of the desmosomal cadherin-plakoglobin complexes into discrete plasma membrane domains and in the anchoring of intermediate filaments to the desmosomes. [UniProtKB/Swiss-Prot Function]
Synonyms:	DCWHKTA; DP; DPI; DPII
Protein Families:	Druggable Genome
Protein Pathways:	Arrhythmogenic right ventricular cardiomyopathy (ARVC)



[View online »](#)

**Product images:**


HEK293T cells were transfected with the pCMV6-ENTRY control (Cat# [PS100001], Left lane) or pCMV6-ENTRY DSP (Cat# [RC220397], Right lane) cDNA for 48 hrs and lysed. Equivalent amounts of cell lysates (5 ug per lane) were separated by SDS-PAGE and immunoblotted with anti-DSP rabbit polyclonal antibody (Cat# [TA890114]).



Western blot analysis of extracts (35ug) from different cell lines and tissues by using anti-DSP rabbit polyclonal antibody.