

## Product datasheet for **TA890113M**

### Desmoglein 1 (DSG1) Rabbit Polyclonal Antibody

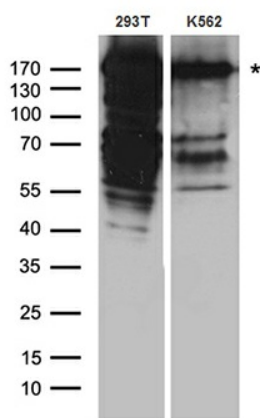
#### Product data:

Product Type:	Primary Antibodies
Applications:	WB
Recommended Dilution:	WB: 1:500~2000
Reactivity:	Human
Host:	Rabbit
Isotype:	IgG
Clonality:	Polyclonal
Immunogen:	Recombinant protein of human DSG1
Formulation:	PBS with 0.02% sodium azide, 50% glycerol, pH7.3
Concentration:	1.99 mg/ml
Purification:	Purified from the immunized serum by affinity chromatography (Protein A/G)
Conjugation:	Unconjugated
Storage:	Store at -20°C as received.
Stability:	Stable for 12 months from date of receipt.
Predicted Protein Size:	113.7 kDa
Gene Name:	desmoglein 1
Database Link:	<a href="#">NP_001933</a> <a href="#">Entrez Gene 1828 Human</a> <a href="#">Q02413</a>
Background:	This gene encodes a member of the desmoglein protein subfamily. Desmogleins, along with desmocollins, are cadherin-like transmembrane glycoproteins that are major components of the desmosome. Desmosomes are cell-cell junctions that help resist shearing forces and are found in high concentrations in cells subject to mechanical stress. This gene is found in a cluster with other desmoglein family members on chromosome 18. The encoded protein has been identified as a target of auto-antibodies in the autoimmune skin blistering disease pemphigus foliaceus. Disruption of this gene has also been associated with the skin diseases palmoplantar keratoderma and erythroderma. [provided by RefSeq, Feb 2015]
Synonyms:	CDHF4; DG1; DSG; EPKHE; EPKHIA; PPKS1; SPPK1


[View online »](#)

Protein Families: Druggable Genome

## Product images:



Western blot analysis of extracts (35ug) from different cell lines and tissues by using anti-DSG1 rabbit polyclonal antibody.