

## Product datasheet for **TA890111S**

### DISC1 Rabbit Polyclonal Antibody

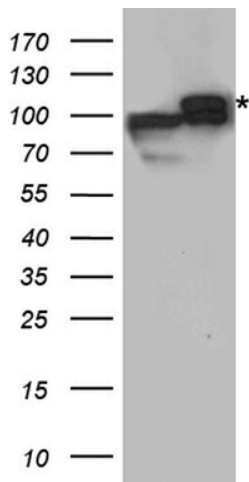
#### Product data:

Product Type:	Primary Antibodies
Applications:	WB
Recommended Dilution:	WB: 1:500~2000
Reactivity:	Human, Rat, Mouse
Host:	Rabbit
Isotype:	IgG
Clonality:	Polyclonal
Immunogen:	Recombinant protein of human DISC1
Formulation:	PBS with 0.02% sodium azide, 50% glycerol, pH7.3
Concentration:	0.77 mg/ml
Purification:	Purified from the immunized serum by affinity chromatography (Protein A/G)
Conjugation:	Unconjugated
Storage:	Store at -20°C as received.
Stability:	Stable for 12 months from date of receipt.
Predicted Protein Size:	93.4 kDa
Gene Name:	disrupted in schizophrenia 1
Database Link:	<a href="#">NP_061132</a> <a href="#">Entrez Gene 244667</a> <a href="#">MouseEntrez Gene 307940</a> <a href="#">RatEntrez Gene 27185</a> <a href="#">Human Q9NRI5</a>
Background:	This gene encodes a protein with multiple coiled coil motifs which is located in the nucleus, cytoplasm and mitochondria. The protein is involved in neurite outgrowth and cortical development through its interaction with other proteins. This gene is disrupted in a t(1;11) (q42.1;q14.3) translocation which segregates with schizophrenia and related psychiatric disorders in a large Scottish family. Alternate transcriptional splice variants, encoding different isoforms, have been characterized. [provided by RefSeq, Jul 2008]
Synonyms:	C1orf136; SCZD9

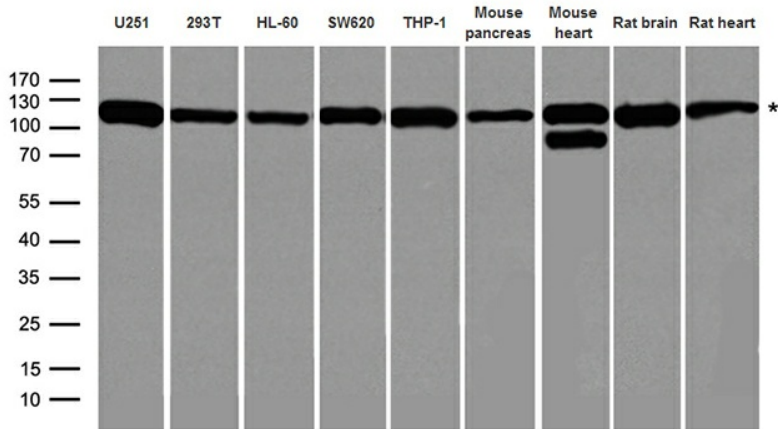


[View online »](#)

Product images:



HEK293T cells were transfected with the pCMV6-ENTRY control (Cat# [PS100001], Left lane) or pCMV6-ENTRY DISC1 (Cat# [RC228608], Right lane) cDNA for 48 hrs and lysed. Equivalent amounts of cell lysates (5 ug per lane) were separated by SDS-PAGE and immunoblotted with anti-DISC1 antibody (Cat# [TA890111]). Positive lysates [LY402701] (100ug) and [LC402701] (20ug) can be purchased separately from OriGene.



Western blot analysis of extracts (35ug) from different cell lines and tissues by using anti-DISC1 rabbit polyclonal antibody.