

Product datasheet for **TA890110M**

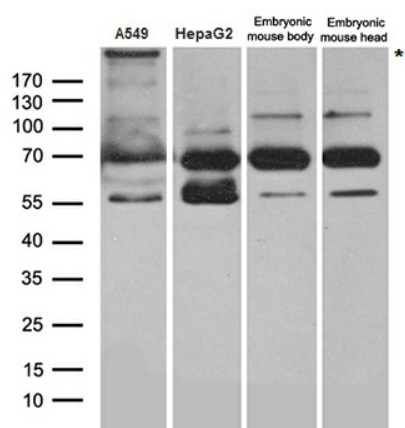
Dicer (DICER1) Rabbit Polyclonal Antibody

Product data:

Product Type:	Primary Antibodies
Applications:	WB
Recommended Dilution:	WB: 1:500~2000
Reactivity:	Human, Mouse, Rat
Host:	Rabbit
Isotype:	IgG
Clonality:	Polyclonal
Immunogen:	Recombinant protein of human DICER1
Formulation:	PBS with 0.02% sodium azide, 50% glycerol, pH7.3
Concentration:	1.19 mg/ml
Purification:	Purified from the immunized serum by affinity chromatography (Protein A/G)
Conjugation:	Unconjugated
Storage:	Store at -20°C as received.
Stability:	Stable for 12 months from date of receipt.
Predicted Protein Size:	218.5 kDa
Gene Name:	dicer 1, ribonuclease III
Database Link:	NP_803187 Entrez Gene 192119 MouseEntrez Gene 299284 RatEntrez Gene 23405 Human Q9UPY3
Background:	This gene encodes a protein possessing an RNA helicase motif containing a DEXH box in its amino terminus and an RNA motif in the carboxy terminus. The encoded protein functions as a ribonuclease and is required by the RNA interference and small temporal RNA (stRNA) pathways to produce the active small RNA component that represses gene expression. Alternative splicing results in multiple transcript variants. [provided by RefSeq, Sep 2010]
Synonyms:	DCR1; Dicer; Dicer1e; HERNA; K12H4.8-LIKE; MNG1; RMSE2
Protein Families:	Druggable Genome


[View online »](#)

Product images:



Western blot analysis of extracts (35ug) from different cell lines and tissues by using anti-DICER1 rabbit polyclonal antibody.