

## Product datasheet for TA890110

### Dicer (DICER1) Rabbit Polyclonal Antibody

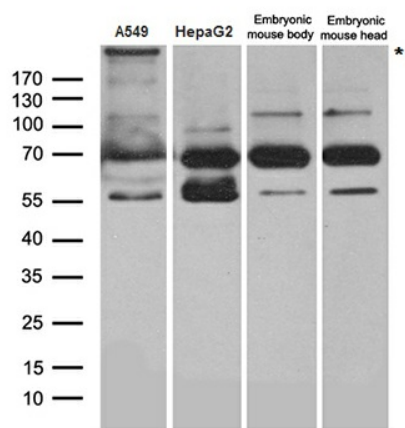
#### Product data:

|                         |   |
|-------------------------|---|
| Product Type:           | Primary Antibodies  |
| Applications:           | WB  |
| Recommended Dilution:   | WB: 1:500~2000  |
| Reactivity:             | Human, Mouse, Rat   |
| Host:                   | Rabbit  |
| Isotype:                | IgG   |
| Clonality:              | Polyclonal  |
| Immunogen:              | Recombinant protein of human DICER1   |
| Formulation:            | PBS with 0.02% sodium azide, 50% glycerol, pH7.3  |
| Concentration:          | 1.19 mg/ml  |
| Purification:           | Purified from the immunized serum by affinity chromatography (Protein A/G)  |
| Storage:                | Store at -20°C as received.   |
| Stability:              | Stable for 12 months from date of receipt.  |
| Predicted Protein Size: | 218.5 kDa   |
| Gene Name:              | dicer 1, ribonuclease III   |
| Database Link:          | <a href="#">NP_803187 Entrez Gene 192119 MouseEntrez Gene 299284 RatEntrez Gene 23405 Human</a>   |
| Background:             | This gene encodes a protein possessing an RNA helicase motif containing a DEXH box in its amino terminus and an RNA motif in the carboxy terminus. The encoded protein functions as a ribonuclease and is required by the RNA interference and small temporal RNA (stRNA) pathways to produce the active small RNA component that represses gene expression. Alternative splicing results in multiple transcript variants. [provided by RefSeq, Sep 2010] |
| Synonyms:               | DCR1; Dicer; Dicer1e; HERNA; K12H4.8-LIKE; MNG1; RMSE2  |
| Protein Families:       | Druggable Genome  |



[View online »](#)

## Product images:



Western blot analysis of extracts (35ug) from different cell lines and tissues by using anti-DICER1 rabbit polyclonal antibody.