

## Product datasheet for **TA890108**

### CUX1 Rabbit Polyclonal Antibody

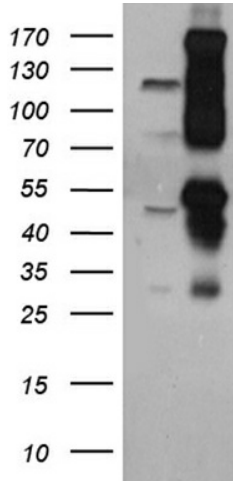
#### Product data:

Product Type:	Primary Antibodies
Applications:	WB
Recommended Dilution:	WB: 1:500~2000
Reactivity:	Human, Rat, Mouse
Host:	Rabbit
Isotype:	IgG
Clonality:	Polyclonal
Immunogen:	Recombinant protein of human CUX1
Formulation:	PBS with 0.02% sodium azide, 50% glycerol, pH7.3
Concentration:	1.04 mg/ml
Purification:	Purified from the immunized serum by affinity chromatography (Protein A/G)
Conjugation:	Unconjugated
Storage:	Store at -20°C as received.
Stability:	Stable for 12 months from date of receipt.
Predicted Protein Size:	77.3 kDa
Gene Name:	cut like homeobox 1
Database Link:	<a href="#">NP_001904</a> <a href="#">Entrez Gene 13047 Mouse</a> <a href="#">Entrez Gene 116639 Rat</a> <a href="#">Entrez Gene 1523 Human</a> <a href="#">Q13948</a>
Background:	The protein encoded by this gene is a member of the homeodomain family of DNA binding proteins. It may regulate gene expression, morphogenesis, and differentiation and it may also play a role in the cell cycle progression. Several alternatively spliced transcript variants encoding different isoforms have been identified. [provided by RefSeq, Feb 2011]
Synonyms:	CASP; CDP; CDP1; Clox; COY1; Cut; CUTL1; CUX; Cux; GOLIM6; Nbla10317; p100; p110; p200
Protein Families:	Transcription Factors, Transmembrane

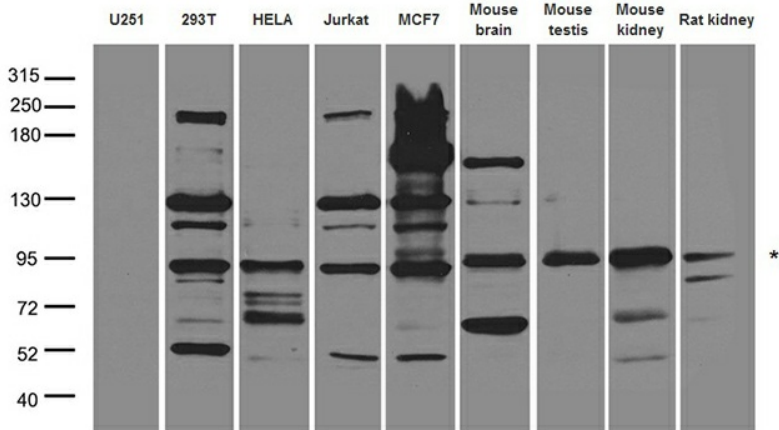


[View online »](#)

Product images:



HEK293T cells were transfected with the pCMV6-ENTRY control (Cat# [PS100001], Left lane) or pCMV6-ENTRY CUX1 (Cat# [RC235316], Right lane) cDNA for 48 hrs and lysed. Equivalent amounts of cell lysates (5 ug per lane) were separated by SDS-PAGE and immunoblotted with anti-CUX1 antibody (Cat# TA890108). Positive lysates [LY419649] (100ug) and [LC419649] (20ug) can be purchased separately from OriGene.



Western blot analysis of extracts (35ug) from different cell lines and tissues by using anti-CUX1 rabbit polyclonal antibody.