

Product datasheet for **TA890107S**

Chymotrypsin like protease (CTRL) Rabbit Polyclonal Antibody

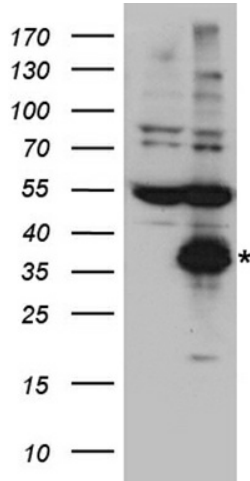
Product data:

Product Type:	Primary Antibodies
Applications:	WB
Recommended Dilution:	WB: 1:500~2000
Reactivity:	Human, Rat, Mouse
Host:	Rabbit
Isotype:	IgG
Clonality:	Polyclonal
Immunogen:	Recombinant protein of human CTRL
Formulation:	PBS with 0.02% sodium azide, 50% glycerol, pH7.3
Concentration:	3.91 mg/ml
Purification:	Purified from the immunized serum by affinity chromatography (Protein A/G)
Conjugation:	Unconjugated
Storage:	Store at -20°C as received.
Stability:	Stable for 12 months from date of receipt.
Predicted Protein Size:	28 kDa
Gene Name:	chymotrypsin like
Database Link:	NP_001898 Entrez Gene 109660 MouseEntrez Gene 117184 RatEntrez Gene 1506 Human P40313
Background:	This gene encodes a serine-type endopeptidase with chymotrypsin- and elastase-2-like activities. The gene encoding this zymogen is expressed specifically in the pancreas and likely functions as a digestive enzyme. [provided by RefSeq, Sep 2016]
Synonyms:	CTRL1
Protein Families:	Druggable Genome, Protease

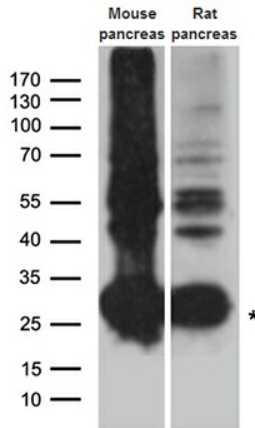


[View online »](#)

Product images:



HEK293T cells were transfected with the pCMV6-ENTRY control (Cat# [PS100001], Left lane) or pCMV6-ENTRY CTRL (Cat# [RC209072], Right lane) cDNA for 48 hrs and lysed. Equivalent amounts of cell lysates (5 ug per lane) were separated by SDS-PAGE and immunoblotted with anti-CTRL antibody (Cat# [TA890107]). Positive lysates [LY419665] (100ug) and [LC419665] (20ug) can be purchased separately from OriGene.



Western blot analysis of extracts (35ug) from different cell lines and tissues by using anti-CTRL rabbit polyclonal antibody.