

Product datasheet for **TA890106S**

CFTR Rabbit Polyclonal Antibody

Product data:

Product Type:	Primary Antibodies
Applications:	ICC/IF, WB
Recommended Dilution:	WB: 1:500~2000
Reactivity:	Human, Mouse, Rat
Host:	Rabbit
Isotype:	IgG
Clonality:	Polyclonal
Immunogen:	Recombinant protein of human CFTR
Formulation:	PBS with 0.02% sodium azide, 50% glycerol, pH7.3
Concentration:	0.94 mg/ml
Purification:	Purified from the immunized serum by affinity chromatography (Protein A/G)
Conjugation:	Unconjugated
Storage:	Store at -20°C as received.
Stability:	Stable for 12 months from date of receipt.
Predicted Protein Size:	168.6 kDa
Gene Name:	cystic fibrosis transmembrane conductance regulator
Database Link:	NP_000483 Entrez Gene 12638 MouseEntrez Gene 24255 RatEntrez Gene 1080 Human P13569

Background: This gene encodes a member of the ATP-binding cassette (ABC) transporter superfamily. ABC proteins transport various molecules across extra- and intra-cellular membranes. ABC genes are divided into seven distinct subfamilies (ABC1, MDR/TAP, MRP, ALD, OABP, GCN20, White). This protein is a member of the MRP subfamily that is involved in multi-drug resistance. The encoded protein functions as a chloride channel and controls the regulation of other transport pathways. Mutations in this gene are associated with the autosomal recessive disorders cystic fibrosis and congenital bilateral aplasia of the vas deferens. Alternatively spliced transcript variants have been described, many of which result from mutations in this gene. [provided by RefSeq, Jul 2008]



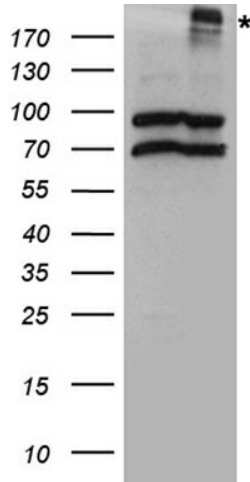
[View online »](#)

Synonyms: ABC35; ABCC7; CF; CFTR/MRP; dj760C5.1; MRP7; TNR-CFTR

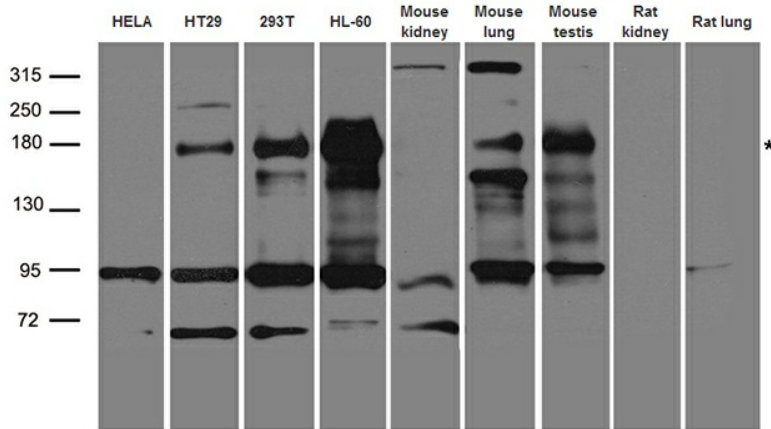
Protein Families: Druggable Genome, Transmembrane

Protein Pathways: ABC transporters, Vibrio cholerae infection

Product images:



HEK293T cells were transfected with the pCMV6-ENTRY control (Cat# [PS100001], Left lane) or pCMV6-ENTRY CFTR (Cat# [RC216476], Right lane) cDNA for 48 hrs and lysed. Equivalent amounts of cell lysates (5 ug per lane) were separated by SDS-PAGE and immunoblotted with anti-CFTR rabbit polyclonal antibody (Cat# [TA890106]).



Western blot analysis of extracts (35ug) from different cell lines and tissues by using anti-CFTR rabbit polyclonal antibody.