

Product datasheet for **TA890105**

CBL Rabbit Polyclonal Antibody

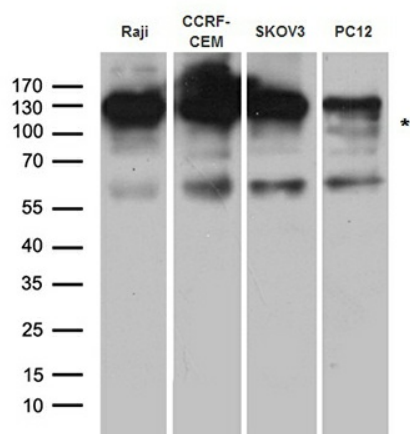
Product data:

| | |
|-------------------------|---|
| Product Type: | Primary Antibodies |
| Applications: | WB |
| Recommended Dilution: | WB: 1:500~2000 |
| Reactivity: | Human, Rat, Mouse |
| Host: | Rabbit |
| Isotype: | IgG |
| Clonality: | Polyclonal |
| Immunogen: | Recombinant protein of human CBL |
| Formulation: | PBS with 0.02% sodium azide, 50% glycerol, pH7.3 |
| Concentration: | 3.19 mg/ml |
| Purification: | Purified from the immunized serum by affinity chromatography (Protein A/G) |
| Conjugation: | Unconjugated |
| Storage: | Store at -20°C as received. |
| Stability: | Stable for 12 months from date of receipt. |
| Predicted Protein Size: | 99.5 kDa |
| Gene Name: | Cbl proto-oncogene |
| Database Link: | NP_005179 Entrez Gene 12402 Mouse Entrez Gene 500985 Rat Entrez Gene 867 Human P22681 |
| Synonyms: | C-CBL; CBL2; FRA11B; NSLL; RNF55 |
| Protein Families: | Druggable Genome, Transcription Factors |
| Protein Pathways: | Chronic myeloid leukemia, Endocytosis, ErbB signaling pathway, Insulin signaling pathway, Jak-STAT signaling pathway, Pathways in cancer, T cell receptor signaling pathway, Ubiquitin mediated proteolysis |



[View online »](#)

Product images:



Western blot analysis of extracts (35ug) from different cell lines and tissues by using anti-CBL rabbit polyclonal antibody.