

## Product datasheet for **TA890104S**

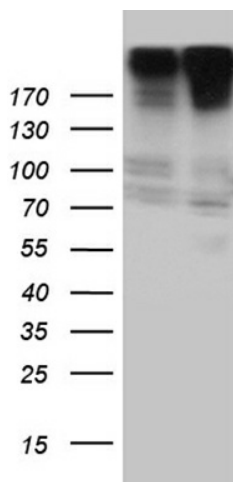
### CAD Rabbit Polyclonal Antibody

#### Product data:

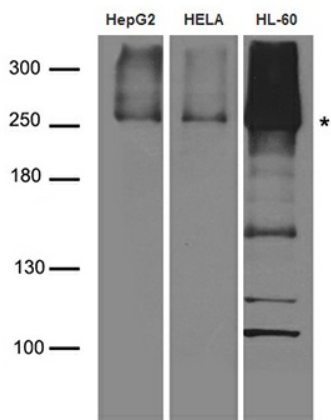
Product Type:	Primary Antibodies
Applications:	WB
Recommended Dilution:	WB: 1:500~2000
Reactivity:	Human, Mouse, Rat
Host:	Rabbit
Isotype:	IgG
Clonality:	Polyclonal
Immunogen:	Recombinant protein of human CAD
Formulation:	PBS with 0.02% sodium azide, 50% glycerol, pH7.3
Concentration:	1.91 mg/ml
Purification:	Purified from the immunized serum by affinity chromatography (Protein A/G)
Conjugation:	Unconjugated
Storage:	Store at -20°C as received.
Stability:	Stable for 12 months from date of receipt.
Predicted Protein Size:	243 kDa
Gene Name:	carbamoyl-phosphate synthetase 2, aspartate transcarbamylase, and dihydroorotase
Database Link:	<a href="#">NP_004332</a> <a href="#">Entrez Gene 24240 Rat</a> <a href="#">Entrez Gene 69719 Mouse</a> <a href="#">Entrez Gene 790 Human</a> <a href="#">P27708</a>
Synonyms:	and dihydroorotase; aspartate transcarbamylase; CAD trifunctional protein; carbamoyl-phosphate synthetase 2; carbamoylphosphate synthetase 2; dihydroorotase; multifunctional protein CAD
Protein Families:	Druggable Genome
Protein Pathways:	Alanine, aspartate and glutamate metabolism, Metabolic pathways, Pyrimidine metabolism



[View online »](#)

**Product images:**


HEK293T cells were transfected with the pCMV6-ENTRY control (Left lane) or pCMV6-ENTRY CAD ([RC209469], Right lane) cDNA for 48 hrs and lysed. Equivalent amounts of cell lysates (5 ug per lane) were separated by SDS-PAGE and immunoblotted with anti-CAD rabbit polyclonal antibody.



Western blot analysis of extracts (35ug) from different cell lines and tissues by using anti-CAD rabbit polyclonal antibody.