

## Product datasheet for **TA890101M**

### BAZ1A Rabbit Polyclonal Antibody

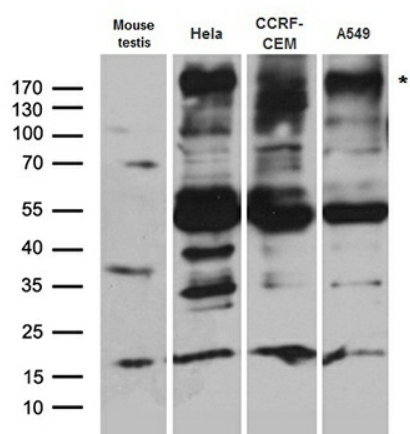
#### Product data:

Product Type:	Primary Antibodies
Applications:	WB
Recommended Dilution:	WB: 1:500~2000
Reactivity:	Human, Mouse, Rat
Host:	Rabbit
Isotype:	IgG
Clonality:	Polyclonal
Immunogen:	Recombinant protein of human BAZ1A
Formulation:	PBS with 0.02% sodium azide, 50% glycerol, pH7.3
Concentration:	5.12 mg/ml
Purification:	Purified from the immunized serum by affinity chromatography (Protein A/G)
Conjugation:	Unconjugated
Storage:	Store at -20°C as received.
Stability:	Stable for 12 months from date of receipt.
Predicted Protein Size:	175.8 kDa
Gene Name:	bromodomain adjacent to zinc finger domain 1A
Database Link:	<a href="#">NP_872589</a> <a href="#">Entrez Gene 217578 MouseEntrez Gene 314126 RatEntrez Gene 11177 Human</a> <a href="#">Q9NRL2</a>
Background:	Component of the histone-fold protein complex CHRAC complex which facilitates nucleosome sliding by the ACF complex and enhances ACF-mediated chromatin assembly. The C-terminal regions of both CHRAC1 and POLE1 are required for these functions. [UniProtKB/Swiss-Prot Function]
Synonyms:	ACF1; hACF1; WALp1; WCRF180
Protein Families:	Druggable Genome



[View online »](#)

## Product images:



Western blot analysis of extracts (35ug) from different cell lines and tissues by using anti-BAZ1A rabbit polyclonal antibody.