

## Product datasheet for **TA890100M**

### ATR Rabbit Polyclonal Antibody

#### Product data:

Product Type:	Primary Antibodies
Applications:	WB
Recommended Dilution:	WB: 1:500~2000
Reactivity:	Human, Mouse, Rat
Host:	Rabbit
Isotype:	IgG
Clonality:	Polyclonal
Immunogen:	Recombinant protein of human ATR
Formulation:	PBS with 0.02% sodium azide, 50% glycerol, pH7.3
Concentration:	1.36 mg/ml
Purification:	Purified from the immunized serum by affinity chromatography (Protein A/G)
Conjugation:	Unconjugated
Storage:	Store at -20°C as received.
Stability:	Stable for 12 months from date of receipt.
Predicted Protein Size:	301.2 kDa
Gene Name:	ATR serine/threonine kinase
Database Link:	<a href="#">NP_001175</a> <a href="#">Entrez Gene 245000 MouseEntrez Gene 685055 RatEntrez Gene 545 Human Q13535</a>

**Background:** The protein encoded by this gene belongs the PI3/PI4-kinase family, and is most closely related to ATM, a protein kinase encoded by the gene mutated in ataxia telangiectasia. This protein and ATM share similarity with Schizosaccharomyces pombe rad3, a cell cycle checkpoint gene required for cell cycle arrest and DNA damage repair in response to DNA damage. This kinase has been shown to phosphorylate checkpoint kinase CHK1, checkpoint proteins RAD17, and RAD9, as well as tumor suppressor protein BRCA1. Mutations of this gene are associated with Seckel syndrome. An alternatively spliced transcript variant of this gene has been reported, however, its full length nature is not known. Transcript variants utilizing alternative polyA sites exist. [provided by RefSeq, Jul 2008]

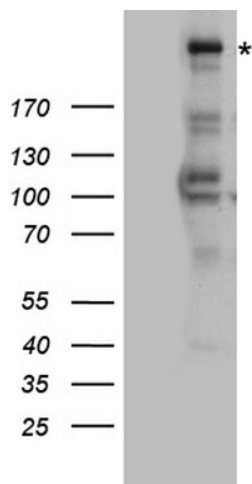
[View online »](#)

**Synonyms:** FCTCS; FRP1; MEC1; SCKL; SCKL1

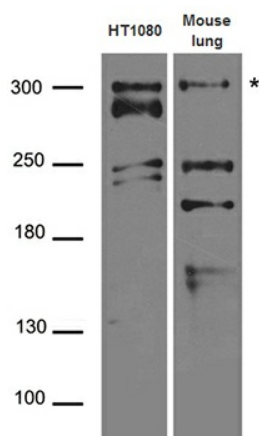
**Protein Families:** Druggable Genome, Protein Kinase

**Protein Pathways:** Cell cycle, p53 signaling pathway

### Product images:



HEK293T cells were transfected with the pCMV6-ENTRY control (Cat# [PS100001], Left lane) or pCMV6-ENTRY ATR (Cat# [RC224837], Right lane) cDNA for 48 hrs and lysed. Equivalent amounts of cell lysates (5 ug per lane) were separated by SDS-PAGE and immunoblotted with anti-ATR rabbit polyclonal antibody (Cat# [TA890100]).



Western blot analysis of extracts (35ug) from different cell lines and tissues by using anti-ATR rabbit polyclonal antibody.