

Product datasheet for **TA890097M**

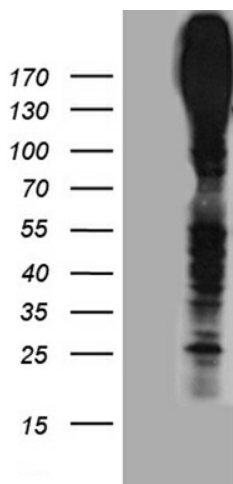
MRP3 (ABCC3) Rabbit Polyclonal Antibody

Product data:

Product Type:	Primary Antibodies
Applications:	WB
Recommended Dilution:	WB: 1:500~2000
Reactivity:	Human
Host:	Rabbit
Isotype:	IgG
Clonality:	Polyclonal
Immunogen:	Recombinant protein of human ABCC3
Formulation:	PBS with 0.02% sodium azide, 50% glycerol, pH7.3
Concentration:	3.12 mg/ml
Purification:	Purified from the immunized serum by affinity chromatography (Protein A/G)
Conjugation:	Unconjugated
Storage:	Store at -20°C as received.
Stability:	Stable for 12 months from date of receipt.
Predicted Protein Size:	169.2 kDa
Gene Name:	ATP binding cassette subfamily C member 3
Database Link:	NP_003777 Entrez Gene 8714 Human O15438
Synonyms:	ABC31; cMOAT2; EST90757; MLP2; MOAT-D; MRP3
Protein Families:	Druggable Genome, Transmembrane
Protein Pathways:	ABC transporters



[View online »](#)

Product images:


HEK293T cells were transfected with the pCMV6-ENTRY control (Cat# [PS100001], Left lane) or pCMV6-ENTRY ABCC3 (Cat# [RC221522], Right lane) cDNA for 48 hrs and lysed. Equivalent amounts of cell lysates (5 ug per lane) were separated by SDS-PAGE and immunoblotted with anti-ABCC3 antibody (Cat# [TA890097]). Positive lysates [LY418434] (100ug) and [LC418434] (20ug) can be purchased separately from OriGene.