

Product datasheet for **TA890096S**

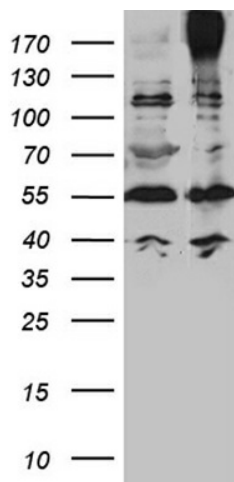
MRP2 (ABCC2) Rabbit Polyclonal Antibody

Product data:

Product Type:	Primary Antibodies
Applications:	WB
Recommended Dilution:	WB: 1:500~2000
Reactivity:	Human
Host:	Rabbit
Isotype:	IgG
Clonality:	Polyclonal
Immunogen:	Recombinant protein of human ABCC2
Formulation:	PBS with 0.02% sodium azide, 50% glycerol, pH7.3
Concentration:	1.95 mg/ml
Purification:	Purified from the immunized serum by affinity chromatography (Protein A/G)
Conjugation:	Unconjugated
Storage:	Store at -20°C as received.
Stability:	Stable for 12 months from date of receipt.
Predicted Protein Size:	174 kDa
Gene Name:	ATP binding cassette subfamily C member 2
Database Link:	NP_000383 Entrez Gene 1244 Human Q92887
Background:	Mediates hepatobiliary excretion of numerous organic anions. May function as a cellular cisplatin transporter. [UniProtKB/Swiss-Prot Function]
Synonyms:	ABC30; CMOAT; cMRP; DJS; MRP2
Protein Families:	Druggable Genome, Transmembrane
Protein Pathways:	ABC transporters



[View online »](#)

Product images:

HEK293T cells were transfected with the pCMV6-ENTRY control (Left lane) or pCMV6-ENTRY ABCC2 ([RC218976], Right lane) cDNA for 48 hrs and lysed. Equivalent amounts of cell lysates (5 ug per lane) were separated by SDS-PAGE and immunoblotted with anti-ABCC2 rabbit polyclonal antibody.