

## Product datasheet for **TA890067S**

### Chromogranin B (CHGB) Rabbit Polyclonal Antibody

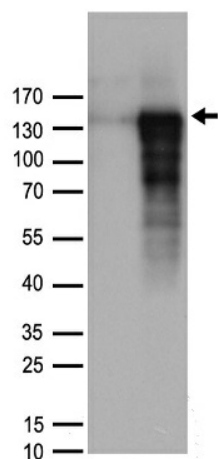
#### Product data:

Product Type:	Primary Antibodies
Applications:	WB
Recommended Dilution:	WB: 1:2000
Reactivity:	Human
Host:	Rabbit
Isotype:	IgG
Clonality:	Polyclonal
Immunogen:	Recombinant protein of human CHGB
Formulation:	PBS with 0.02% sodium azide, 50% glycerol, pH7.3
Concentration:	1.68mg/ml
Purification:	Purified from the immunized serum by affinity chromatography (Protein A/G)
Conjugation:	Unconjugated
Storage:	Store at -20°C as received.
Stability:	Stable for 12 months from date of receipt.
Predicted Protein Size:	78.25 kDa
Gene Name:	chromogranin B
Database Link:	<a href="#">NP_001810</a> <a href="#">Entrez Gene 1114 Human P05060</a>
Background:	This gene encodes a tyrosine-sulfated secretory protein abundant in peptidergic endocrine cells and neurons. This protein may serve as a precursor for regulatory peptides. [provided by RefSeq, Jan 2009]
Synonyms:	SCG1
Protein Families:	Secreted Protein



[View online »](#)

## Product images:



HEK293T cells were transfected with the pCMV6-ENTRY control (Cat# [PS100001], Left lane) or pCMV6-ENTRY CHGB (Cat# [RC201744], Right lane) cDNA for 48 hrs and lysed. Equivalent amounts of cell lysates (5 ug per lane) were separated by SDS-PAGE and immunoblotted with anti-CHGB rabbit polyclonal antibody (Cat# [TA890067]).