

Product datasheet for **TA890066S**

CEBP Alpha (CEBPA) Rabbit Polyclonal Antibody

Product data:

| | |
|-------------------------|---|
| Product Type: | Primary Antibodies |
| Applications: | WB |
| Recommended Dilution: | WB: 1:2000 |
| Reactivity: | Human, Mouse, Rat |
| Host: | Rabbit |
| Isotype: | IgG |
| Clonality: | Polyclonal |
| Immunogen: | Recombinant protein of human CEBPA |
| Formulation: | PBS with 0.02% sodium azide, 50% glycerol, pH7.3 |
| Concentration: | 2.23mg/ml |
| Purification: | Purified from the immunized serum by affinity chromatography (Protein A/G) |
| Conjugation: | Unconjugated |
| Storage: | Store at -20°C as received. |
| Stability: | Stable for 12 months from date of receipt. |
| Predicted Protein Size: | 37.4 kDa |
| Gene Name: | CCAAT/enhancer binding protein alpha |
| Database Link: | NP_004355 Entrez Gene 12606 Mouse Entrez Gene 24252 Rat Entrez Gene 1050 Human P49715 |

Background: This intronless gene encodes a transcription factor that contains a basic leucine zipper (bZIP) domain and recognizes the CCAAT motif in the promoters of target genes. The encoded protein functions in homodimers and also heterodimers with CCAAT/enhancer-binding proteins beta and gamma. Activity of this protein can modulate the expression of genes involved in cell cycle regulation as well as in body weight homeostasis. Mutation of this gene is associated with acute myeloid leukemia. The use of alternative in-frame non-AUG (GUG) and AUG start codons results in protein isoforms with different lengths. Differential translation initiation is mediated by an out-of-frame, upstream open reading frame which is located between the GUG and the first AUG start codons. [provided by RefSeq, Dec 2013]



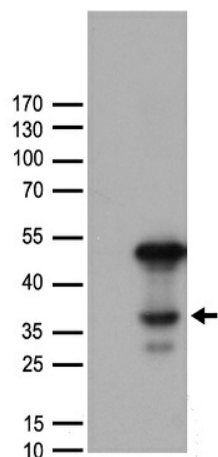
[View online »](#)

Synonyms: C/EBP-alpha; CEBP

Protein Families: Druggable Genome, ES Cell Differentiation/IPS

Protein Pathways: Acute myeloid leukemia, Pathways in cancer

Product images:



HEK293T cells were transfected with the pCMV6-ENTRY control (Cat# [PS100001], Left lane) or pCMV6-ENTRY CEBPA (Cat# [RC218955], Right lane) cDNA for 48 hrs and lysed. Equivalent amounts of cell lysates (5 ug per lane) were separated by SDS-PAGE and immunoblotted with anti-CEBPA antibody (Cat# [TA890066]). Positive lysates [LY418038] (100ug) and [LC418038] (20ug) can be purchased separately from OriGene.