

## Product datasheet for TA890066M

### CEBP Alpha (CEBPA) Rabbit Polyclonal Antibody

#### Product data:

Product Type:	Primary Antibodies
Applications:	WB
Recommended Dilution:	WB: 1:2000
Reactivity:	Human, Mouse, Rat
Host:	Rabbit
Isotype:	IgG
Clonality:	Polyclonal
Immunogen:	Recombinant protein of human CEBPA
Formulation:	PBS with 0.02% sodium azide, 50% glycerol, pH7.3
Concentration:	2.23mg/ml
Purification:	Purified from the immunized serum by affinity chromatography (Protein A/G)
Conjugation:	Unconjugated
Storage:	Store at -20°C as received.
Stability:	Stable for 12 months from date of receipt.
Predicted Protein Size:	37.4 kDa
Gene Name:	CCAAT/enhancer binding protein alpha
Database Link:	<a href="#">NP_004355</a> <a href="#">Entrez Gene 12606 Mouse</a> <a href="#">Entrez Gene 24252 Rat</a> <a href="#">Entrez Gene 1050 Human</a> <a href="#">P49715</a>
Background:	This intronless gene encodes a transcription factor that contains a basic leucine zipper (bZIP) domain and recognizes the CCAAT motif in the promoters of target genes. The encoded protein functions in homodimers and also heterodimers with CCAAT/enhancer-binding proteins beta and gamma. Activity of this protein can modulate the expression of genes involved in cell cycle regulation as well as in body weight homeostasis. Mutation of this gene is associated with acute myeloid leukemia. The use of alternative in-frame non-AUG (GUG) and AUG start codons results in protein isoforms with different lengths. Differential translation initiation is mediated by an out-of-frame, upstream open reading frame which is located between the GUG and the first AUG start codons. [provided by RefSeq, Dec 2013]

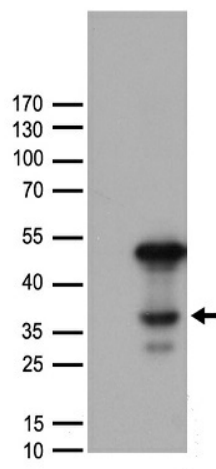

[View online »](#)

**Synonyms:** C/EBP-alpha; CEBP

**Protein Families:** Druggable Genome, ES Cell Differentiation/IPS

**Protein Pathways:** Acute myeloid leukemia, Pathways in cancer

**Product images:**



HEK293T cells were transfected with the pCMV6-ENTRY control (Cat# [PS100001], Left lane) or pCMV6-ENTRY CEBPA (Cat# [RC218955], Right lane) cDNA for 48 hrs and lysed. Equivalent amounts of cell lysates (5 ug per lane) were separated by SDS-PAGE and immunoblotted with anti-CEBPA antibody (Cat# [TA890066]). Positive lysates [LY418038] (100ug) and [LC418038] (20ug) can be purchased separately from OriGene.