

Product datasheet for **TA890065M**

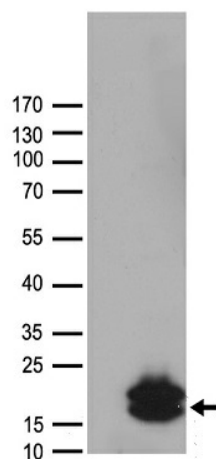
Orexin (HCRT) Rabbit Polyclonal Antibody

Product data:

Product Type:	Primary Antibodies
Applications:	WB
Recommended Dilution:	WB: 1:500
Reactivity:	Human, Rat
Host:	Rabbit
Isotype:	IgG
Clonality:	Polyclonal
Immunogen:	Recombinant protein of human HCRT
Formulation:	PBS with 0.02% sodium azide, 50% glycerol, pH7.3
Concentration:	2.52mg/ml
Purification:	Purified from the immunized serum by affinity chromatography (Protein A/G)
Conjugation:	Unconjugated
Storage:	Store at -20°C as received.
Stability:	Stable for 12 months from date of receipt.
Predicted Protein Size:	13.2 kDa
Gene Name:	hypocretin (orexin) neuropeptide precursor
Database Link:	NP_001515 Entrez Gene 25723 Rat Entrez Gene 3060 Human O43612
Background:	This gene encodes a hypothalamic neuropeptide precursor protein that gives rise to two mature neuropeptides, orexin A and orexin B, by proteolytic processing. Orexin A and orexin B, which bind to orphan G-protein coupled receptors HCRT1 and HCRT2, function in the regulation of sleep and arousal. This neuropeptide arrangement may also play a role in feeding behavior, metabolism, and homeostasis. [provided by RefSeq, Jan 2010]
Synonyms:	NRCLP1; OX; PPOX
Protein Families:	Druggable Genome, Transmembrane



[View online »](#)

Product images:


HEK293T cells were transfected with the pCMV6-ENTRY control (Cat# [PS100001], Left lane) or pCMV6-ENTRY HCRT (Cat# [RC217956], Right lane) cDNA for 48 hrs and lysed. Equivalent amounts of cell lysates (5 ug per lane) were separated by SDS-PAGE and immunoblotted with anti-HCRT antibody (Cat# [TA890065]). Positive lysates [LY419884] (100ug) and [LC419884] (20ug) can be purchased separately from OriGene.