

## Product datasheet for **TA890064S**

### Guanylin (GUCA2A) Rabbit Polyclonal Antibody

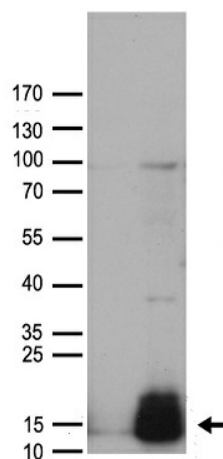
#### Product data:

Product Type:	Primary Antibodies
Applications:	WB
Recommended Dilution:	WB: 1:500
Reactivity:	Human
Host:	Rabbit
Isotype:	IgG
Clonality:	Polyclonal
Immunogen:	Recombinant protein of human GUCA2A
Formulation:	PBS with 0.02% sodium azide, 50% glycerol, pH7.3
Concentration:	5.44mg/ml
Purification:	Purified from the immunized serum by affinity chromatography (Protein A/G)
Conjugation:	Unconjugated
Storage:	Store at -20°C as received.
Stability:	Stable for 12 months from date of receipt.
Predicted Protein Size:	12.2 kDa
Gene Name:	guanylate cyclase activator 2A
Database Link:	<a href="#">NP_291031</a> <a href="#">Entrez Gene 2980 Human</a> <a href="#">Q02747</a>
Background:	Endogenous activator of intestinal guanylate cyclase. It stimulates this enzyme through the same receptor binding region as the heat-stable enterotoxins. [UniProtKB/Swiss-Prot Function]
Synonyms:	GCAP-I; GUCA2; STARA
Protein Families:	Secreted Protein, Transmembrane



[View online »](#)

## Product images:



HEK293T cells were transfected with the pCMV6-ENTRY control (Cat# [PS100001], Left lane) or pCMV6-ENTRY GUCA2A (Cat# [RC217195], Right lane) cDNA for 48 hrs and lysed. Equivalent amounts of cell lysates (5 ug per lane) were separated by SDS-PAGE and immunoblotted with anti-GUCA2A antibody (Cat# [TA890064]). Positive lysates [LY409429] (100ug) and [LC409429] (20ug) can be purchased separately from OriGene.