

Product datasheet for **TA890064M**

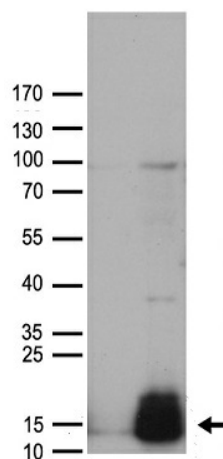
Guanylin (GUCA2A) Rabbit Polyclonal Antibody

Product data:

| | |
|-------------------------|-------------------------------------------------------------------------------------------------------------------------------------------------------------------------------------------|
| Product Type: | Primary Antibodies |
| Applications: | WB |
| Recommended Dilution: | WB: 1:500 |
| Reactivity: | Human |
| Host: | Rabbit |
| Isotype: | IgG |
| Clonality: | Polyclonal |
| Immunogen: | Recombinant protein of human GUCA2A |
| Formulation: | PBS with 0.02% sodium azide, 50% glycerol, pH7.3 |
| Concentration: | 5.44mg/ml |
| Purification: | Purified from the immunized serum by affinity chromatography (Protein A/G) |
| Conjugation: | Unconjugated |
| Storage: | Store at -20°C as received. |
| Stability: | Stable for 12 months from date of receipt. |
| Predicted Protein Size: | 12.2 kDa |
| Gene Name: | guanylate cyclase activator 2A |
| Database Link: | NP_291031 Entrez Gene 2980 Human Q02747 |
| Background: | Endogenous activator of intestinal guanylate cyclase. It stimulates this enzyme through the same receptor binding region as the heat-stable enterotoxins. [UniProtKB/Swiss-Prot Function] |
| Synonyms: | GCAP-I; GUCA2; STARA |
| Protein Families: | Secreted Protein, Transmembrane |

[View online »](#)

Product images:



HEK293T cells were transfected with the pCMV6-ENTRY control (Cat# [PS100001], Left lane) or pCMV6-ENTRY GUCA2A (Cat# [RC217195], Right lane) cDNA for 48 hrs and lysed. Equivalent amounts of cell lysates (5 ug per lane) were separated by SDS-PAGE and immunoblotted with anti-GUCA2A antibody (Cat# [TA890064]). Positive lysates [LY409429] (100ug) and [LC409429] (20ug) can be purchased separately from OriGene.