

## Product datasheet for **TA890061**

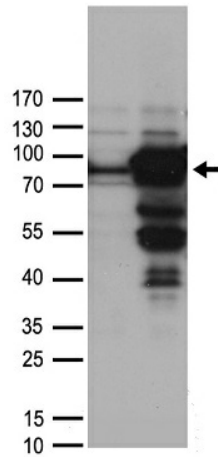
### WDR48 Rabbit Polyclonal Antibody

#### Product data:

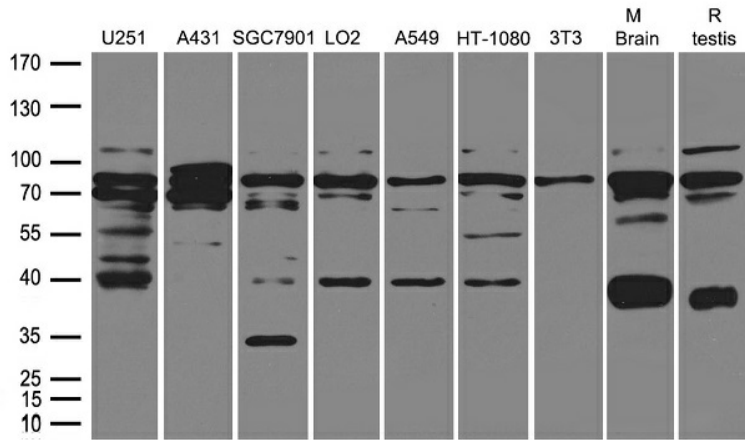
Product Type:	Primary Antibodies
Applications:	WB
Recommended Dilution:	WB: 1:500
Reactivity:	Human, Mouse, Rat
Host:	Rabbit
Isotype:	IgG
Clonality:	Polyclonal
Immunogen:	Recombinant protein of human WDR48
Formulation:	PBS with 0.02% sodium azide, 50% glycerol, pH7.3
Concentration:	1.72mg/ml
Purification:	Purified from the immunized serum by affinity chromatography (Protein A/G)
Conjugation:	Unconjugated
Storage:	Store at -20°C as received.
Stability:	Stable for 12 months from date of receipt.
Predicted Protein Size:	76 kDa
Gene Name:	WD repeat domain 48
Database Link:	<a href="#">NP_065890</a> <a href="#">Entrez Gene 67561</a> <a href="#">MouseEntrez Gene 363164</a> <a href="#">RatEntrez Gene 57599</a> <a href="#">Human Q8TAF3</a>
Synonyms:	Bun62; P80; SPG60; UAF1



[View online »](#)

**Product images:**


HEK293T cells were transfected with the pCMV6-ENTRY control (Cat# [PS100001], Left lane) or pCMV6-ENTRY WDR48 (Cat# [RC205497], Right lane) cDNA for 48 hrs and lysed. Equivalent amounts of cell lysates (5 ug per lane) were separated by SDS-PAGE and immunoblotted with anti-WDR48 antibody (Cat# TA890061). Positive lysates [LY412261] (100ug) and [LC412261] (20ug) can be purchased separately from OriGene.



Western blot analysis of extracts (35ug) from different cell lines or tissues by using anti-WDR48 rabbit polyclonal antibody (TA890061).