

## Product datasheet for **TA890057S**

### Cyclin A2 (CCNA2) Rabbit Polyclonal Antibody

#### Product data:

Product Type:	Primary Antibodies
Applications:	WB
Recommended Dilution:	WB: 1:1000~1:2000
Reactivity:	Human, Mouse, Rat
Host:	Rabbit
Isotype:	IgG
Clonality:	Polyclonal
Immunogen:	Recombinant protein of human CCNA2
Formulation:	PBS with 0.02% sodium azide, 50% glycerol, pH7.3
Concentration:	3.92mg/ml
Purification:	Purified from the immunized serum by affinity chromatography (Protein A/G)
Conjugation:	Unconjugated
Storage:	Store at -20°C as received.
Stability:	Stable for 12 months from date of receipt.
Predicted Protein Size:	48.4 kDa
Gene Name:	cyclin A2
Database Link:	<a href="#">NP_001228</a> <a href="#">Entrez Gene 12428 MouseEntrez Gene 114494 RatEntrez Gene 890 Human P20248</a>
Background:	The protein encoded by this gene belongs to the highly conserved cyclin family, whose members are characterized by a dramatic periodicity in protein abundance through the cell cycle. Cyclins function as regulators of CDK kinases. Different cyclins exhibit distinct expression and degradation patterns which contribute to the temporal coordination of each mitotic event. In contrast to cyclin A1, which is present only in germ cells, this cyclin is expressed in all tissues tested. This cyclin binds and activates CDC2 or CDK2 kinases, and thus promotes both cell cycle G1/S and G2/M transitions. [provided by RefSeq, Jul 2008]
Synonyms:	CCN1; CCNA

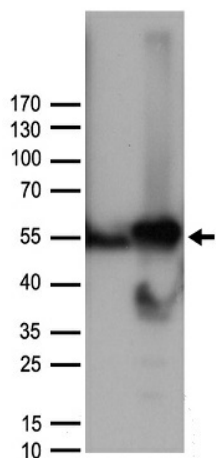


[View online »](#)

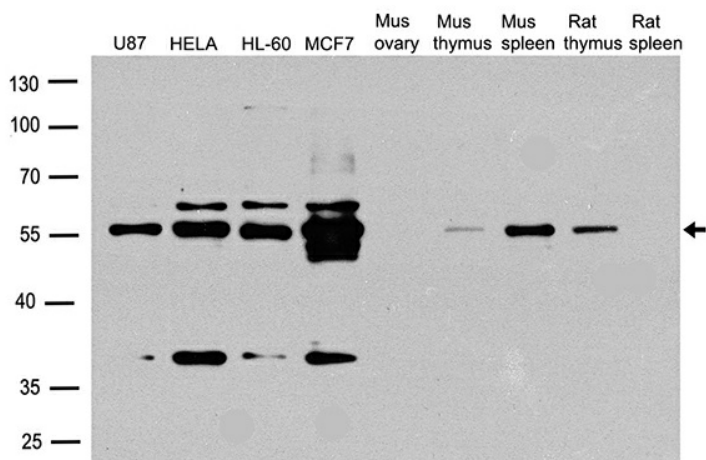
**Protein Families:** Druggable Genome, Stem cell - Pluripotency

**Protein Pathways:** Cell cycle, Progesterone-mediated oocyte maturation

**Product images:**



HEK293T cells were transfected with the pCMV6-ENTRY control (Cat# [PS100001], Left lane) or pCMV6-ENTRY CCNA2 (Cat# [RC211148], Right lane) cDNA for 48 hrs and lysed. Equivalent amounts of cell lysates (5 ug per lane) were separated by SDS-PAGE and immunoblotted with anti-CCNA2 antibody (Cat# [TA890057]). Positive lysates [LY400494] (100ug) and [LC400494] (20ug) can be purchased separately from OriGene.



Western blot analysis of extracts (35ug) from different cell lines or tissues by using anti-CCNA2 rabbit polyclonal antibody ([TA890057]).