

## Product datasheet for **TA890056M**

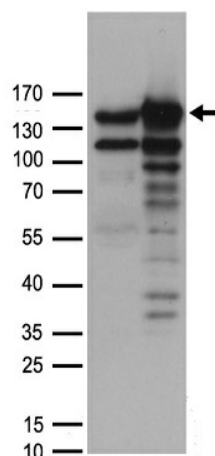
### MYBBP1A Rabbit Polyclonal Antibody

#### Product data:

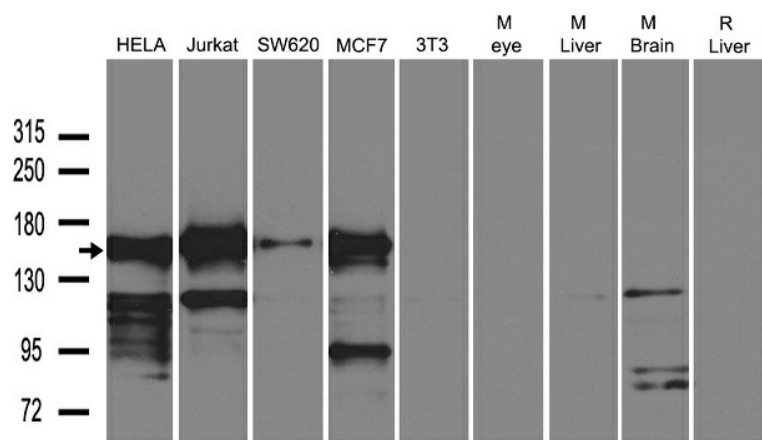
Product Type:	Primary Antibodies
Applications:	WB
Recommended Dilution:	WB: 1:500~1:1000
Reactivity:	Human
Host:	Rabbit
Isotype:	IgG
Clonality:	Polyclonal
Immunogen:	Recombinant protein of human MYBBP1A
Formulation:	PBS with 0.02% sodium azide, 50% glycerol, pH7.3
Concentration:	1.19mg/ml
Purification:	Purified from the immunized serum by affinity chromatography (Protein A/G)
Conjugation:	Unconjugated
Storage:	Store at -20°C as received.
Stability:	Stable for 12 months from date of receipt.
Predicted Protein Size:	148.7 kDa
Gene Name:	MYB binding protein 1a
Database Link:	<a href="#">NP_055335</a> <a href="#">Entrez Gene 10514 Human</a> <a href="#">Q9BQG0</a>
Background:	This gene encodes a nucleolar transcriptional regulator that was first identified by its ability to bind specifically to the Myb proto-oncogene protein. The encoded protein is thought to play a role in many cellular processes including response to nucleolar stress, tumor suppression and synthesis of ribosomal DNA. Alternate splicing results in multiple transcript variants. [provided by RefSeq, Sep 2013]
Synonyms:	P160; PAP2
Protein Families:	Stem cell - Pluripotency, Transcription Factors


[View online »](#)

## Product images:



HEK293T cells were transfected with the pCMV6-ENTRY control (Cat# [PS100001], Left lane) or pCMV6-ENTRY MYBBP1A (Cat# [RC208514], Right lane) cDNA for 48 hrs and lysed. Equivalent amounts of cell lysates (5 ug per lane) were separated by SDS-PAGE and immunoblotted with anti-MYBBP1A antibody (Cat# [TA890056]). Positive lysates [LY415222] (100ug) and [LC415222] (20ug) can be purchased separately from OriGene.



Western blot analysis of extracts (35ug) from different cell lines or tissues by using anti-MYBBP1A rabbit polyclonal antibody ([TA890056]).