

## Product datasheet for **TA890055S**

### HLTF Rabbit Polyclonal Antibody

#### Product data:

Product Type:	Primary Antibodies
Applications:	WB
Recommended Dilution:	WB: 1:500~1:1000
Reactivity:	Human
Host:	Rabbit
Isotype:	IgG
Clonality:	Polyclonal
Immunogen:	Recombinant protein of human HLTF
Formulation:	PBS with 0.02% sodium azide, 50% glycerol, pH7.3
Concentration:	2.41mg/ml
Purification:	Purified from the immunized serum by affinity chromatography (Protein A/G)
Conjugation:	Unconjugated
Storage:	Store at -20°C as received.
Stability:	Stable for 12 months from date of receipt.
Predicted Protein Size:	113.7 kDa
Gene Name:	helicase-like transcription factor
Database Link:	<a href="#">NP_003062</a> <a href="#">Entrez Gene 6596 Human</a> <a href="#">Q14527</a>

**Background:** This gene encodes a member of the SWI/SNF family. Members of this family have helicase and ATPase activities and are thought to regulate transcription of certain genes by altering the chromatin structure around those genes. The encoded protein contains a RING finger DNA binding motif. Two transcript variants encoding the same protein have been found for this gene. However, use of an alternative translation start site produces an isoform that is truncated at the N-terminus compared to the full-length protein. [provided by RefSeq, Jul 2008]

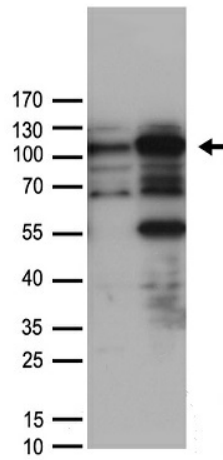
**Synonyms:** HIP116; HIP116A; HLTF1; RNF80; SMARCA3; SNF2L3; ZBU1



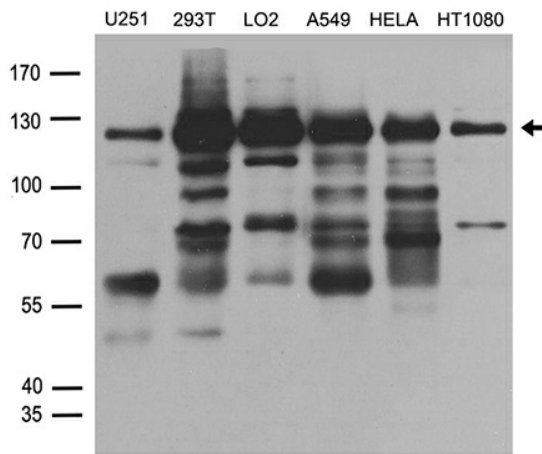
[View online »](#)

Protein Families: Druggable Genome, Transcription Factors

**Product images:**



HEK293T cells were transfected with the pCMV6-ENTRY control (Cat# [PS100001], Left lane) or pCMV6-ENTRY HLTF (Cat# [RC222346], Right lane) cDNA for 48 hrs and lysed. Equivalent amounts of cell lysates (5 ug per lane) were separated by SDS-PAGE and immunoblotted with anti-HLTF antibody (Cat# [TA890055]). Positive lysates [LY401071] (100ug) and [LC401071] (20ug) can be purchased separately from OriGene.



Western blot analysis of extracts (35ug) from different cell lines or tissues by using anti-HLTF rabbit polyclonal antibody ([TA890055]).