

## Product datasheet for **TA890053S**

### CSK Rabbit Polyclonal Antibody

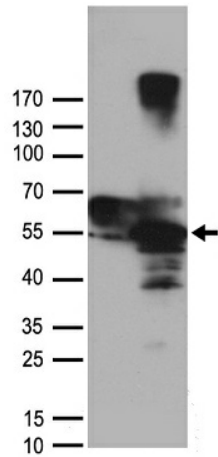
#### Product data:

Product Type:	Primary Antibodies
Applications:	WB
Recommended Dilution:	WB: 1:500~1:1000
Reactivity:	Human, Mouse, Rat
Host:	Rabbit
Isotype:	IgG
Clonality:	Polyclonal
Immunogen:	Recombinant protein of human CSK
Formulation:	PBS with 0.02% sodium azide, 50% glycerol, pH7.3
Concentration:	0.69mg/ml
Purification:	Purified from the immunized serum by affinity chromatography (Protein A/G)
Conjugation:	Unconjugated
Storage:	Store at -20°C as received.
Stability:	Stable for 12 months from date of receipt.
Predicted Protein Size:	50.5 kDa
Gene Name:	c-src tyrosine kinase
Database Link:	<a href="#">NP_004374</a> <a href="#">Entrez Gene 12988 Mouse</a> <a href="#">Entrez Gene 315707 Rat</a> <a href="#">Entrez Gene 1445 Human</a> <a href="#">P41240</a>
Synonyms:	MGC117393
Protein Families:	Druggable Genome, Protein Kinase
Protein Pathways:	Chemokine signaling pathway, Epithelial cell signaling in Helicobacter pylori infection, Neurotrophin signaling pathway, Regulation of actin cytoskeleton

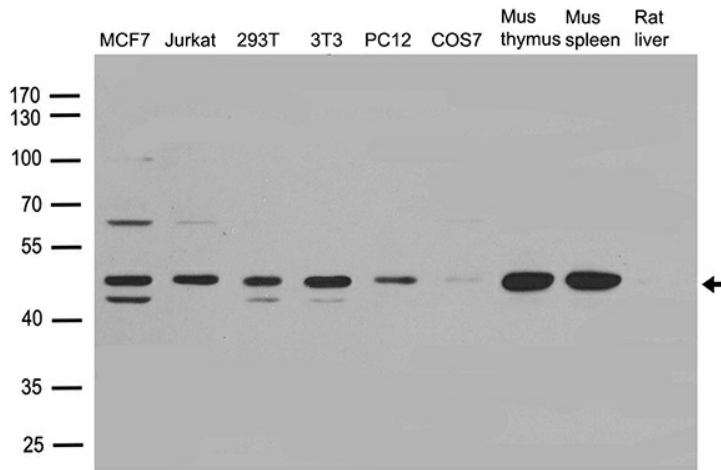


[View online »](#)

Product images:



HEK293T cells were transfected with the pCMV6-ENTRY control (Cat# [PS100001], Left lane) or pCMV6-ENTRY CSK (Cat# [RC210758], Right lane) cDNA for 48 hrs and lysed. Equivalent amounts of cell lysates (5 ug per lane) were separated by SDS-PAGE and immunoblotted with anti-CSK antibody (Cat# [TA890053]). Positive lysates [LY401395] (100ug) and [LC401395] (20ug) can be purchased separately from OriGene.



Western blot analysis of extracts (35ug) from different cell lines or tissues by using anti-CSK rabbit polyclonal antibody ([TA890053]).