

Product datasheet for **TA890053M**

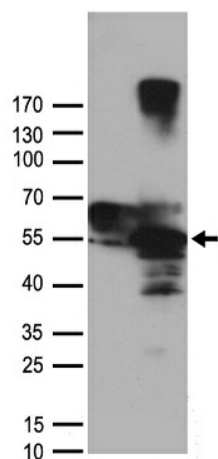
CSK Rabbit Polyclonal Antibody

Product data:

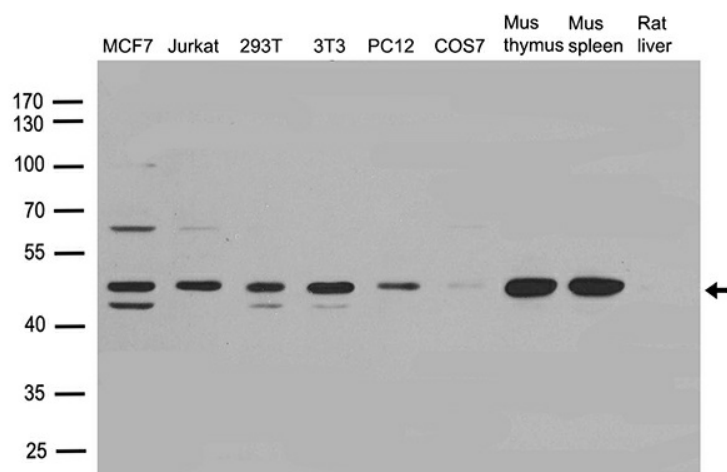
| | |
|-------------------------|--|
| Product Type: | Primary Antibodies |
| Applications: | WB |
| Recommended Dilution: | WB: 1:500~1:1000 |
| Reactivity: | Human, Mouse, Rat |
| Host: | Rabbit |
| Isotype: | IgG |
| Clonality: | Polyclonal |
| Immunogen: | Recombinant protein of human CSK |
| Formulation: | PBS with 0.02% sodium azide, 50% glycerol, pH7.3 |
| Concentration: | 0.69mg/ml |
| Purification: | Purified from the immunized serum by affinity chromatography (Protein A/G) |
| Conjugation: | Unconjugated |
| Storage: | Store at -20°C as received. |
| Stability: | Stable for 12 months from date of receipt. |
| Predicted Protein Size: | 50.5 kDa |
| Gene Name: | c-src tyrosine kinase |
| Database Link: | NP_004374 Entrez Gene 12988 Mouse Entrez Gene 315707 Rat Entrez Gene 1445 Human P41240 |
| Synonyms: | MGC117393 |
| Protein Families: | Druggable Genome, Protein Kinase |
| Protein Pathways: | Chemokine signaling pathway, Epithelial cell signaling in Helicobacter pylori infection, Neurotrophin signaling pathway, Regulation of actin cytoskeleton |



[View online »](#)

Product images:


HEK293T cells were transfected with the pCMV6-ENTRY control (Cat# [PS100001], Left lane) or pCMV6-ENTRY CSK (Cat# [RC210758], Right lane) cDNA for 48 hrs and lysed. Equivalent amounts of cell lysates (5 ug per lane) were separated by SDS-PAGE and immunoblotted with anti-CSK antibody (Cat# [TA890053]). Positive lysates [LY401395] (100ug) and [LC401395] (20ug) can be purchased separately from OriGene.



Western blot analysis of extracts (35ug) from different cell lines or tissues by using anti-CSK rabbit polyclonal antibody ([TA890053]).