

## Product datasheet for **TA890052M**

### **HSPC142 (BABAM1) Rabbit Polyclonal Antibody**

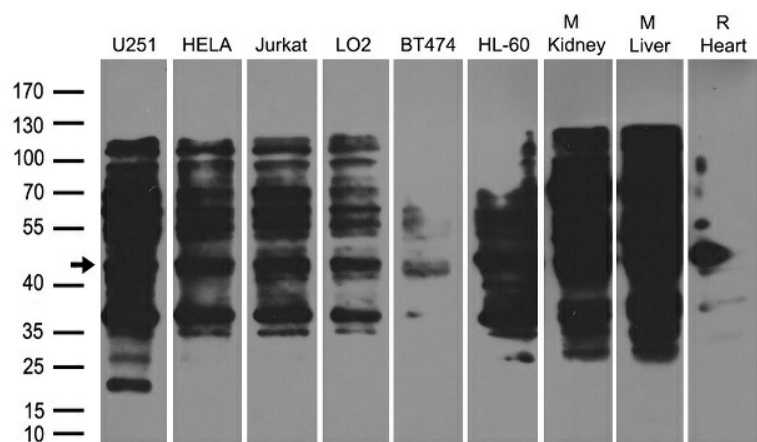
#### **Product data:**

Product Type:	Primary Antibodies
Applications:	WB
Recommended Dilution:	WB: 1:1000
Reactivity:	Human, Mouse, Rat
Host:	Rabbit
Isotype:	IgG
Clonality:	Polyclonal
Immunogen:	Recombinant protein of human BABAM1
Formulation:	PBS with 0.02% sodium azide, 50% glycerol, pH7.3
Concentration:	2.2mg/ml
Purification:	Purified from the immunized serum by affinity chromatography (Protein A/G)
Conjugation:	Unconjugated
Storage:	Store at -20°C as received.
Stability:	Stable for 12 months from date of receipt.
Predicted Protein Size:	36.4 kDa
Gene Name:	BRISC and BRCA1 A complex member 1
Database Link:	<a href="#">NP_001028721</a> <a href="#">Entrez Gene 68251 Mouse</a> <a href="#">Entrez Gene 290631 Rat</a> <a href="#">Entrez Gene 29086 Human</a> <a href="#">Q9NWW8</a>
Synonyms:	C19orf62; HSPC142; MERIT40; NBA1



[View online »](#)

## Product images:



Western blot analysis of extracts (35ug) from different cell lines or tissues by using anti-BABAM1 rabbit polyclonal antibody ([TA890052]).