

## Product datasheet for **TA890051**

### **RNF168 Rabbit Polyclonal Antibody**

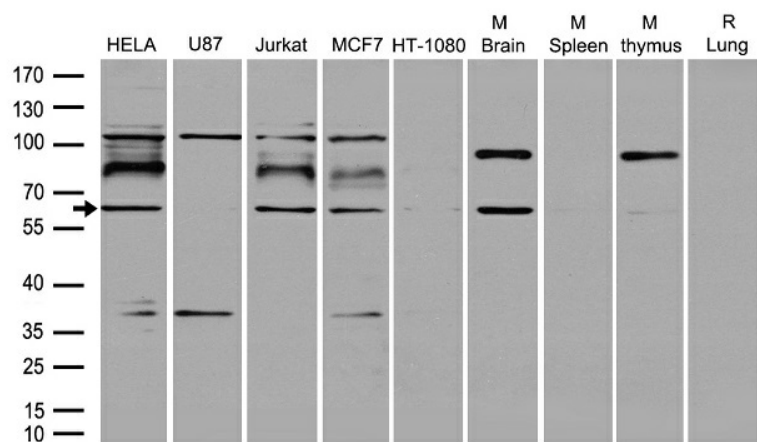
#### **Product data:**

Product Type:	Primary Antibodies
Applications:	WB
Recommended Dilution:	WB: 1:1000
Reactivity:	Human, Mouse
Host:	Rabbit
Isotype:	IgG
Clonality:	Polyclonal
Immunogen:	Recombinant protein of human RNF168
Formulation:	PBS with 0.02% sodium azide, 50% glycerol, pH7.3
Concentration:	1.7mg/ml
Purification:	Purified from the immunized serum by affinity chromatography (Protein A/G)
Conjugation:	Unconjugated
Storage:	Store at -20°C as received.
Stability:	Stable for 12 months from date of receipt.
Predicted Protein Size:	64.8 kDa
Gene Name:	ring finger protein 168
Database Link:	<a href="#">NP_689830</a> <a href="#">Entrez Gene 70238 Mouse</a> <a href="#">Entrez Gene 165918 Human</a> <a href="#">Q8IYW5</a>
Background:	This gene encodes an E3 ubiquitin ligase protein that contains a RING finger, a motif present in a variety of functionally distinct proteins and known to be involved in protein-DNA and protein-protein interactions. The protein is involved in DNA double-strand break (DSB) repair. Mutations in this gene result in Riddle syndrome. [provided by RefSeq, Sep 2011]
Synonyms:	hRNF168



[View online »](#)

## Product images:



Western blot analysis of extracts (35ug) from different cell lines or tissues by using anti-RNF168 rabbit polyclonal antibody (TA890051).