

Product datasheet for **TA890048M**

BMP2 Rabbit Polyclonal Antibody

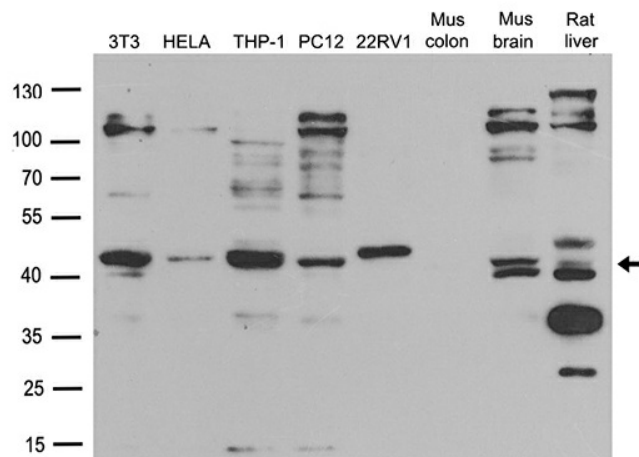
Product data:

Product Type:	Primary Antibodies
Applications:	WB
Recommended Dilution:	WB: 1:1000
Reactivity:	Human, Mouse, Rat
Host:	Rabbit
Isotype:	IgG
Clonality:	Polyclonal
Immunogen:	Recombinant protein of human BMP2
Formulation:	PBS with 0.02% sodium azide, 50% glycerol, pH7.3
Concentration:	1.4mg/ml
Purification:	Purified from the immunized serum by affinity chromatography (Protein A/G)
Conjugation:	Unconjugated
Storage:	Store at -20°C as received.
Stability:	Stable for 12 months from date of receipt.
Predicted Protein Size:	44.63 kDa
Gene Name:	bone morphogenetic protein 2
Database Link:	NP_001191 Entrez Gene 12156 Mouse Entrez Gene 29373 Rat Entrez Gene 650 Human P12643
Background:	This gene encodes a member of the transforming growth factor-beta (TGFB) superfamily. The encoded preproprotein is proteolytically processed to generate each subunit of the disulfide-linked homodimer, which induces bone and cartilage formation. [provided by RefSeq, Nov 2015]
Synonyms:	BDA2; BMP2A
Protein Families:	Adult stem cells, Cancer stem cells, Druggable Genome, Embryonic stem cells, ES Cell Differentiation/IPS, Induced pluripotent stem cells, Secreted Protein, Stem cell relevant signaling - TGFb/BMP signaling pathway, Transmembrane


[View online »](#)

Protein Pathways:

Acute myeloid leukemia, Basal cell carcinoma, Cytokine-cytokine receptor interaction, Endocytosis, Hedgehog signaling pathway, Hematopoietic cell lineage, Melanogenesis, Pathways in cancer, TGF-beta signaling pathway

Product images:


Western blot analysis of extracts (35ug) from different cell lines or tissues by using anti-BMP2 rabbit polyclonal antibody ([TA890048]).