

Product datasheet for **TA890046M**

TGF beta 2 (TGFB2) Rabbit Polyclonal Antibody

Product data:

Product Type:	Primary Antibodies
Applications:	WB
Recommended Dilution:	WB: 1:500~1:1000
Reactivity:	Human, Mouse, Rat
Host:	Rabbit
Isotype:	IgG
Clonality:	Polyclonal
Immunogen:	Recombinant protein of human TGFB2
Formulation:	PBS with 0.02% sodium azide, 50% glycerol, pH7.3
Concentration:	3.25mg/ml
Purification:	Purified from the immunized serum by affinity chromatography (Protein A/G)
Conjugation:	Unconjugated
Storage:	Store at -20°C as received.
Stability:	Stable for 12 months from date of receipt.
Predicted Protein Size:	47.6 kDa
Gene Name:	transforming growth factor beta 2
Database Link:	NP_003229 Entrez Gene 21808 Mouse Entrez Gene 81809 Rat Entrez Gene 7042 Human P61812



[View online »](#)

Background:

This gene encodes a member of the transforming growth factor beta (TGFB) family of cytokines, which are multifunctional peptides that regulate proliferation, differentiation, adhesion, migration, and other functions in many cell types by transducing their signal through combinations of transmembrane type I and type II receptors (TGFB1 and TGFB2) and their downstream effectors, the SMAD proteins. Disruption of the TGFB/SMAD pathway has been implicated in a variety of human cancers. The encoded protein is secreted and has suppressive effects of interleukin-2 dependent T-cell growth. Translocation t(1;7)(q41;p21) between this gene and HDAC9 is associated with Peters' anomaly, a congenital defect of the anterior chamber of the eye. The knockout mice lacking this gene show perinatal mortality and a wide range of developmental, including cardiac, defects. Alternatively spliced transcript variants encoding different isoforms have been identified. [provided by RefSeq, Sep 2010]

Synonyms:

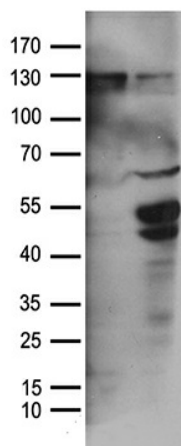
G-TSF; LDS4; TGF-beta2

Protein Families:

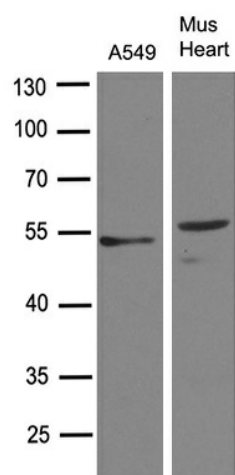
Druggable Genome, Secreted Protein, Transmembrane

Protein Pathways:

Cell cycle, Chronic myeloid leukemia, Colorectal cancer, Cytokine-cytokine receptor interaction, Dilated cardiomyopathy, Hypertrophic cardiomyopathy (HCM), MAPK signaling pathway, Pancreatic cancer, Pathways in cancer, Renal cell carcinoma, TGF-beta signaling pathway

Product images:


HEK293T cells were transfected with the pCMV6-ENTRY control (Cat# [PS100001], Left lane) or pCMV6-ENTRY TGFB2 (Cat# [RC212624], Right lane) cDNA for 48 hrs and lysed. Equivalent amounts of cell lysates (5 ug per lane) were separated by SDS-PAGE and immunoblotted with anti-TGFB2 antibody (Cat# [TA890046]). Positive lysates [LY401115] (100ug) and [LC401115] (20ug) can be purchased separately from OriGene.



Western blot analysis of extracts (35ug) from different cell lines or tissues by using anti-TGFB2 rabbit polyclonal antibody ([TA890046]).