

## Product datasheet for **TA890043M**

### GLCNE (GNE) Rabbit Polyclonal Antibody

#### Product data:

Product Type:	Primary Antibodies
Applications:	WB
Recommended Dilution:	WB: 1:500~1:1000
Reactivity:	Human, Mouse, Rat
Host:	Rabbit
Isotype:	IgG
Clonality:	Polyclonal
Immunogen:	Recombinant protein of human GNE
Formulation:	PBS with 0.02% sodium azide, 50% glycerol, pH7.3
Concentration:	4.29mg/ml
Purification:	Purified from the immunized serum by affinity chromatography (Protein A/G)
Conjugation:	Unconjugated
Storage:	Store at -20°C as received.
Stability:	Stable for 12 months from date of receipt.
Predicted Protein Size:	79.1 kDa
Gene Name:	glucosamine (UDP-N-acetyl)-2-epimerase/N-acetylmannosamine kinase
Database Link:	<a href="#">NP_005467</a> <a href="#">Entrez Gene 50798 Mouse</a> <a href="#">Entrez Gene 114711 Rat</a> <a href="#">Entrez Gene 10020 Human</a> <a href="#">Q9Y223</a>

**Background:** The protein encoded by this gene is a bifunctional enzyme that initiates and regulates the biosynthesis of N-acetylneuraminic acid (NeuAc), a precursor of sialic acids. It is a rate-limiting enzyme in the sialic acid biosynthetic pathway. Sialic acid modification of cell surface molecules is crucial for their function in many biologic processes, including cell adhesion and signal transduction. Differential sialylation of cell surface molecules is also implicated in the tumorigenicity and metastatic behavior of malignant cells. Mutations in this gene are associated with sialuria, autosomal recessive inclusion body myopathy, and Nonaka myopathy. Alternative splicing of this gene results in transcript variants encoding different isoforms. [provided by RefSeq, Jul 2008]

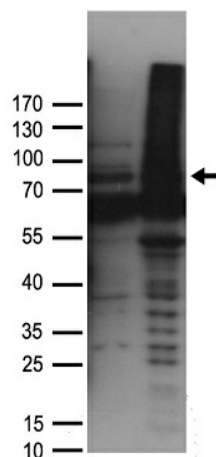

[View online »](#)

**Synonyms:** DMRV; GLCNE; IBM2; NM; Uae1

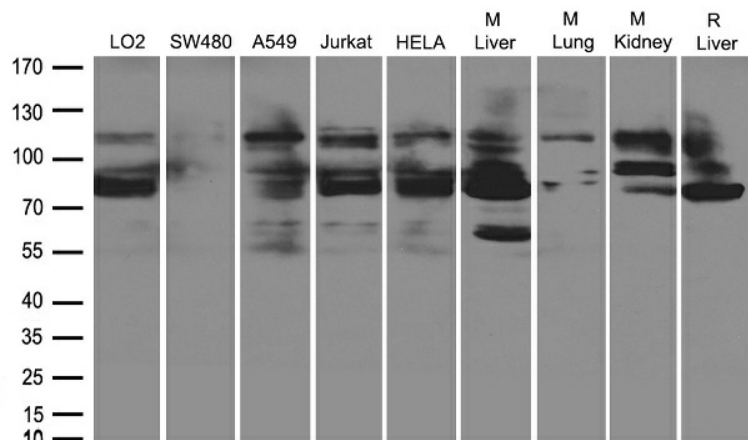
**Protein Families:** Druggable Genome

**Protein Pathways:** Amino sugar and nucleotide sugar metabolism, Metabolic pathways

### Product images:



HEK293T cells were transfected with the pCMV6-ENTRY control (Cat# [PS100001], Left lane) or pCMV6-ENTRY GNE (Cat# [RC222626], Right lane) cDNA for 48 hrs and lysed. Equivalent amounts of cell lysates (5 ug per lane) were separated by SDS-PAGE and immunoblotted with anti-GNE antibody (Cat# [TA890043]). Positive lysates [LY417278] (100ug) and [LC417278] (20ug) can be purchased separately from OriGene.



Western blot analysis of extracts (35ug) from different cell lines or tissues by using anti-GNE rabbit polyclonal antibody ([TA890043]).