

Product datasheet for **TA890042S**

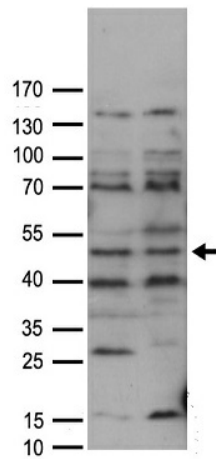
CCDC98 (FAM175A) Rabbit Polyclonal Antibody

Product data:

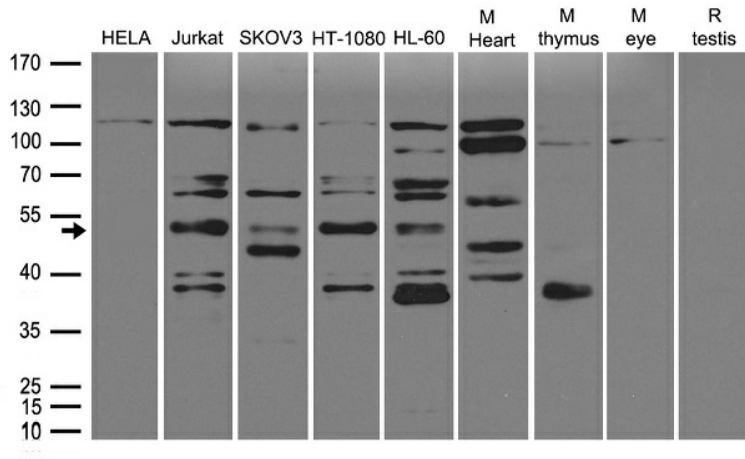
Product Type:	Primary Antibodies
Applications:	WB
Recommended Dilution:	WB: 1:500~1:1000
Reactivity:	Human
Host:	Rabbit
Isotype:	IgG
Clonality:	Polyclonal
Immunogen:	Recombinant protein of human FAM175A
Formulation:	PBS with 0.02% sodium azide, 50% glycerol, pH7.3
Concentration:	1.92mg/ml
Purification:	Purified from the immunized serum by affinity chromatography (Protein A/G)
Conjugation:	Unconjugated
Storage:	Store at -20°C as received.
Stability:	Stable for 12 months from date of receipt.
Predicted Protein Size:	46.5 kDa
Gene Name:	family with sequence similarity 175 member A
Database Link:	NP_620775 Entrez Gene 84142 Human Q6UWZ7
Synonyms:	ABRA1; CCDC98



[View online »](#)

Product images:


HEK293T cells were transfected with the pCMV6-ENTRY control (Cat# [PS100001], Left lane) or pCMV6-ENTRY FAM175A (Cat# [RC208008], Right lane) cDNA for 48 hrs and lysed. Equivalent amounts of cell lysates (5 ug per lane) were separated by SDS-PAGE and immunoblotted with anti-FAM175A antibody (Cat# [TA890042]). Positive lysates [LY408418] (100ug) and [LC408418] (20ug) can be purchased separately from OriGene.



Western blot analysis of extracts (35ug) from different cell lines or tissues by using anti-FAM175A rabbit polyclonal antibody ([TA890042]).