

## Product datasheet for **TA890034**

### **POLR2G Rabbit Polyclonal Antibody**

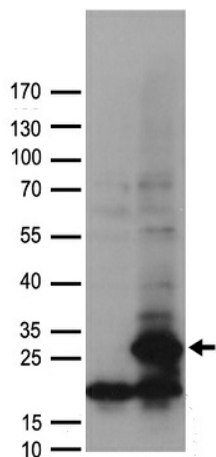
#### **Product data:**

Product Type:	Primary Antibodies
Applications:	WB
Recommended Dilution:	WB: 1:500~1:1000
Reactivity:	Human, Mouse, Rat
Host:	Rabbit
Isotype:	IgG
Clonality:	Polyclonal
Immunogen:	Recombinant protein of human POLR2G
Formulation:	PBS with 0.02% sodium azide, 50% glycerol, pH7.3
Concentration:	2.83mg/ml
Purification:	Purified from the immunized serum by affinity chromatography (Protein A/G)
Conjugation:	Unconjugated
Storage:	Store at -20°C as received.
Stability:	Stable for 12 months from date of receipt.
Predicted Protein Size:	19.1 kDa
Gene Name:	polymerase (RNA) II subunit G
Database Link:	<a href="#">NP_002687</a> <a href="#">Entrez Gene 67710 Mouse</a> <a href="#">Entrez Gene 117017 Rat</a> <a href="#">Entrez Gene 5436 Human</a> <a href="#">P62487</a>
Background:	This gene encodes the seventh largest subunit of RNA polymerase II, the polymerase responsible for synthesizing messenger RNA in eukaryotes. The protein functions in transcription initiation, and is also thought to help stabilize transcribing polymerase molecules during elongation. [provided by RefSeq, Jan 2009]
Synonyms:	hRPB19; hsRPB7; RPB7; RPB19
Protein Families:	Transcription Factors
Protein Pathways:	Huntington's disease, Metabolic pathways, Purine metabolism, Pyrimidine metabolism, RNA polymerase

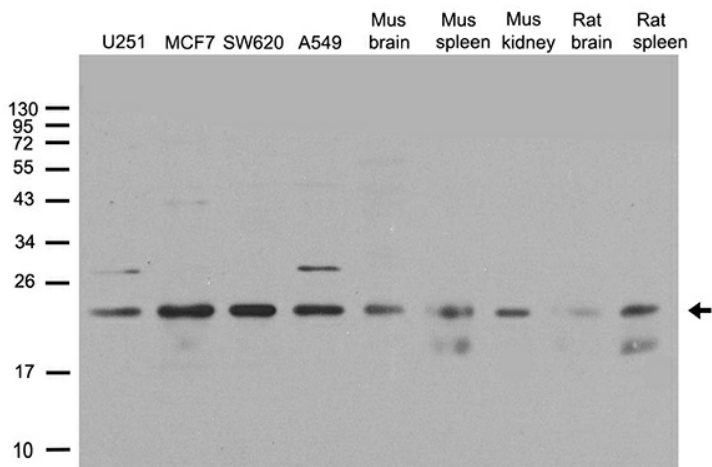


[View online »](#)

**Product images:**



HEK293T cells were transfected with the pCMV6-ENTRY control (Cat# [PS100001], Left lane) or pCMV6-ENTRY POLR2G (Cat# [RC211344], Right lane) cDNA for 48 hrs and lysed. Equivalent amounts of cell lysates (5 ug per lane) were separated by SDS-PAGE and immunoblotted with anti-POLR2G antibody (Cat# TA890034). Positive lysates [LY419162] (100ug) and [LC419162] (20ug) can be purchased separately from OriGene.



Western blot analysis of extracts (35ug) from different cell lines or tissues by using anti-POLR2G rabbit polyclonal antibody (TA890034).