

## Product datasheet for **TA890031S**

### Casein Kinase 2 beta (CSNK2B) Rabbit Polyclonal Antibody

#### Product data:

Product Type:	Primary Antibodies
Applications:	WB
Recommended Dilution:	WB: 1:500~1:1000
Reactivity:	Human, Mouse, Rat
Host:	Rabbit
Isotype:	IgG
Clonality:	Polyclonal
Immunogen:	Recombinant protein of human CSNK2B
Formulation:	PBS with 0.02% sodium azide, 50% glycerol, pH7.3
Concentration:	1.42mg/ml
Purification:	Purified from the immunized serum by affinity chromatography (Protein A/G)
Conjugation:	Unconjugated
Storage:	Store at -20°C as received.
Stability:	Stable for 12 months from date of receipt.
Predicted Protein Size:	24.8 kDa
Gene Name:	casein kinase 2 beta
Database Link:	<a href="#">NP_001311</a> <a href="#">Entrez Gene 13001 Mouse</a> <a href="#">Entrez Gene 81650 Rat</a> <a href="#">Entrez Gene 1460 Human</a> <a href="#">P67870</a>

**Background:** This gene encodes the beta subunit of casein kinase II, a ubiquitous protein kinase which regulates metabolic pathways, signal transduction, transcription, translation, and replication. The enzyme is composed of three subunits, alpha, alpha prime and beta, which form a tetrameric holoenzyme. The alpha and alpha prime subunits are catalytic, while the beta subunit serves regulatory functions. The enzyme localizes to the endoplasmic reticulum and the Golgi apparatus. Two transcript variants encoding different isoforms have been found for this gene. [provided by RefSeq, Sep 2013]

**Synonyms:** CK2B; CK2N; CSK2B; G5A

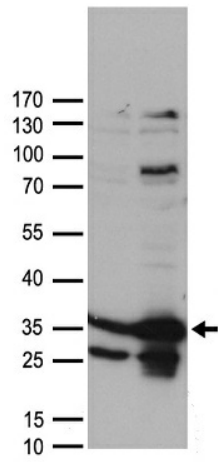


[View online »](#)

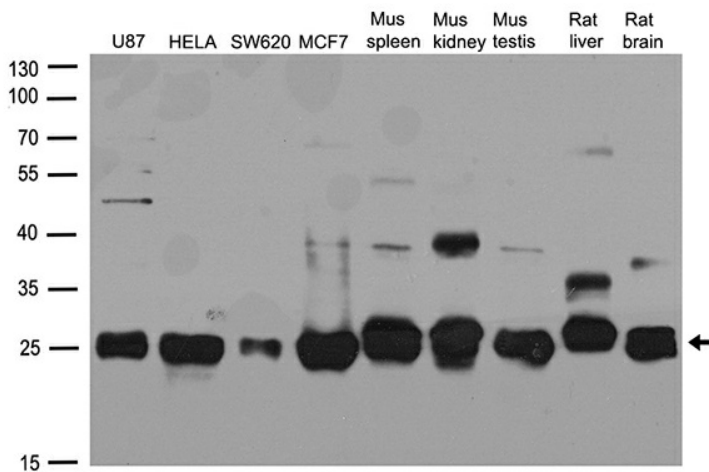
**Protein Families:** Druggable Genome

**Protein Pathways:** Adherens junction, Tight junction, Wnt signaling pathway

**Product images:**



HEK293T cells were transfected with the pCMV6-ENTRY control (Cat# [PS100001], Left lane) or pCMV6-ENTRY CSNK2B (Cat# [RC211299], Right lane) cDNA for 48 hrs and lysed. Equivalent amounts of cell lysates (5 ug per lane) were separated by SDS-PAGE and immunoblotted with anti-CSNK2B antibody (Cat# [TA890031]). Positive lysates [LY400525] (100ug) and [LC400525] (20ug) can be purchased separately from OriGene.



Western blot analysis of extracts (35ug) from different cell lines or tissues by using anti-CSNK2B rabbit polyclonal antibody ([TA890031]).