

Product datasheet for **TA890028AM**

VCP Rabbit Polyclonal Antibody (Biotin conjugated)

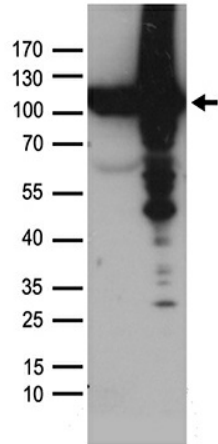
Product data:

Product Type:	Primary Antibodies
Applications:	WB
Recommended Dilution:	WB: 1:500~1:1000
Reactivity:	Human, Mouse, Rat
Host:	Rabbit
Isotype:	IgG
Clonality:	Polyclonal
Immunogen:	Recombinant protein of human VCP
Formulation:	PBS with 0.02% sodium azide, 50% glycerol, pH7.3
Concentration:	0.5 mg/ml
Purification:	Purified from the immunized serum by affinity chromatography (Protein A/G)
Conjugation:	Biotin
Storage:	Store at -20°C as received.
Stability:	Stable for 12 months from date of receipt.
Predicted Protein Size:	89.1 kDa
Gene Name:	valosin containing protein
Database Link:	NP_009057 Entrez Gene 116643 RatEntrez Gene 269523 MouseEntrez Gene 7415 Human P55072
Background:	The protein encoded by this gene is a member of a family that includes putative ATP-binding proteins involved in vesicle transport and fusion, 26S proteasome function, and assembly of peroxisomes. This protein, as a structural protein, is associated with clathrin, and heat-shock protein Hsc70, to form a complex. It has been implicated in a number of cellular events that are regulated during mitosis, including homotypic membrane fusion, spindle pole body function, and ubiquitin-dependent protein degradation. [provided by RefSeq, Jul 2008]
Synonyms:	ALS14; CMT2Y; HEL-220; HEL-S-70; IBMPFD; IBMPFD1; p97; TERA

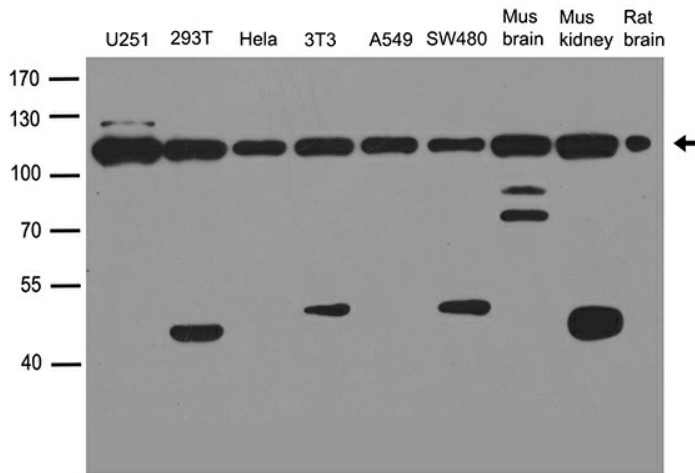


[View online »](#)

Product images:



HEK293T cells were transfected with the pCMV6-ENTRY control (Cat# [PS100001], Left lane) or pCMV6-ENTRY VCP (Cat# [RC211130], Right lane) cDNA for 48 hrs and lysed. Equivalent amounts of cell lysates (5 ug per lane) were separated by SDS-PAGE and immunoblotted with anti-VCP antibody (Cat# [TA890028]). Positive lysates [LY402095] (100ug) and [LC402095] (20ug) can be purchased separately from OriGene.



Western blot analysis of extracts (35ug) from different cell lines or tissues by using anti-VCP rabbit polyclonal antibody ([TA890028]).