

## Product datasheet for **TA890027**

### **RUNX2 Rabbit Polyclonal Antibody**

#### **Product data:**

Product Type:	Primary Antibodies
Applications:	WB
Recommended Dilution:	WB: 1:500~1:1000
Reactivity:	Human, Mouse, Rat
Host:	Rabbit
Isotype:	IgG
Clonality:	Polyclonal
Immunogen:	Recombinant protein of human RUNX2
Formulation:	PBS with 0.02% sodium azide, 50% glycerol, pH7.3
Concentration:	3.19mg/ml
Purification:	Purified from the immunized serum by affinity chromatography (Protein A/G)
Conjugation:	Unconjugated
Storage:	Store at -20°C as received.
Stability:	Stable for 12 months from date of receipt.
Predicted Protein Size:	64.44 kDa
Gene Name:	runt related transcription factor 2
Database Link:	<a href="#">NP_001019801</a> <a href="#">Entrez Gene 12393</a> <a href="#">MouseEntrez Gene 367218</a> <a href="#">RatEntrez Gene 860</a> <a href="#">Human Q13950</a>

**Background:** This gene is a member of the RUNX family of transcription factors and encodes a nuclear protein with an Runt DNA-binding domain. This protein is essential for osteoblastic differentiation and skeletal morphogenesis and acts as a scaffold for nucleic acids and regulatory factors involved in skeletal gene expression. The protein can bind DNA both as a monomer or, with more affinity, as a subunit of a heterodimeric complex. Mutations in this gene have been associated with the bone development disorder cleidocranial dysplasia (CCD). Transcript variants that encode different protein isoforms result from the use of alternate promoters as well as alternate splicing. [provided by RefSeq, Jul 2008]

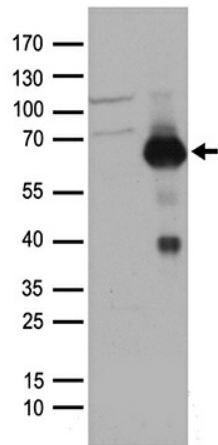
**Synonyms:** AML3; CBF-alpha-1; CBFA1; CCD; CCD1; CLCD; OSF-2; OSF2; PEA2aA; PEBP2aA



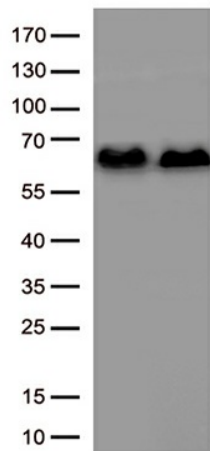
[View online »](#)

Protein Families: Druggable Genome, Transcription Factors

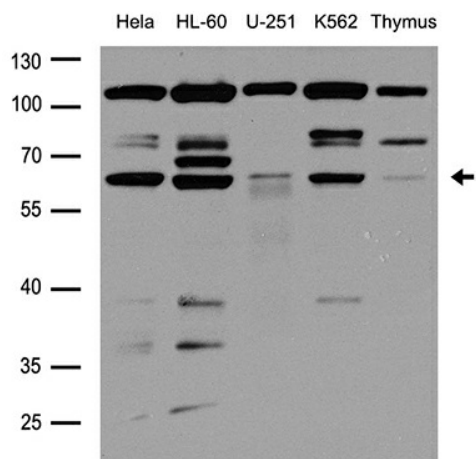
**Product images:**



HEK293T cells were transfected with the pCMV6-ENTRY control (Left lane) or pCMV6-ENTRY RUNX2 ([RC213097], Right lane) cDNA for 48 hrs and lysed. Equivalent amounts of cell lysates (5 ug per lane) were separated by SDS-PAGE and immunoblotted with anti-RUNX2 r. Positive lysates [LY400402] (100ug) and [LC400402] (20ug) can be purchased separately from OriGene.



HEK293T cells were transfected with the RUNX2 transcript variant 1 (Cat# [RC212884], left lane) or RUNX2 transcript variant 2 (Cat# [RC212936], right lane) cDNA clones for 48 hrs and lysed. Equivalent amounts of cell lysates (5 ug per lane) were separated by SDS-PAGE and immunoblotted with anti-RUNX2.



Western blot analysis of extracts (35ug) from different cell lines or tissues by using anti-RUNX2 rabbit polyclonal antibody (TA890027).