

Product datasheet for **TA890022M**

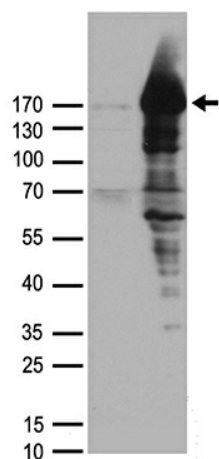
PALB2 Rabbit Polyclonal Antibody

Product data:

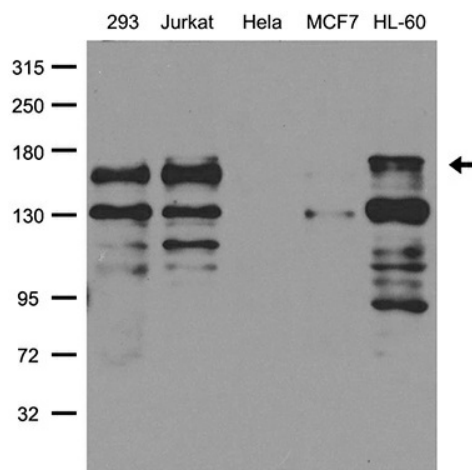
Product Type:	Primary Antibodies
Applications:	WB
Recommended Dilution:	WB: 1:500~1:1000
Reactivity:	Human
Host:	Rabbit
Isotype:	IgG
Clonality:	Polyclonal
Immunogen:	Recombinant protein of human PALB2
Formulation:	PBS with 0.02% sodium azide, 50% glycerol, pH7.3
Concentration:	1.89mg/ml
Purification:	Purified from the immunized serum by affinity chromatography (Protein A/G)
Conjugation:	Unconjugated
Storage:	Store at -20°C as received.
Stability:	Stable for 12 months from date of receipt.
Predicted Protein Size:	131.1 kDa
Gene Name:	partner and localizer of BRCA2
Database Link:	NP_078951 Entrez Gene 79728 Human Q86YC2
Background:	This gene encodes a protein that may function in tumor suppression. This protein binds to and colocalizes with the breast cancer 2 early onset protein (BRCA2) in nuclear foci and likely permits the stable intranuclear localization and accumulation of BRCA2. [provided by RefSeq, Jul 2008]
Synonyms:	FANCN; PNCA3

[View online »](#)

Product images:



HEK293T cells were transfected with the pCMV6-ENTRY control (Left lane) or pCMV6-ENTRY PALB2 ([RC208189], Right lane) cDNA for 48 hrs and lysed. Equivalent amounts of cell lysates (5 ug per lane) were separated by SDS-PAGE and immunoblotted with anti-PALB2 rabbit polyclonal antibody ([TA890022]).



Western blot analysis of extracts (35ug) from different cell lines or tissues by using anti-PALB2 rabbit polyclonal antibody ([TA890022]).