

## Product datasheet for **TA890017AM**

### CCL27 Rabbit Polyclonal Antibody (Biotin conjugated)

#### Product data:

|                         |  |
|-------------------------|--|
| Product Type:           | Primary Antibodies   |
| Applications:           | WB   |
| Recommended Dilution:   | WB: 1:500  |
| Reactivity:             | Human  |
| Host:                   | Rabbit   |
| Isotype:                | IgG  |
| Clonality:              | Polyclonal   |
| Immunogen:              | Recombinant protein of human CCL27   |
| Formulation:            | PBS with 0.02% sodium azide, 50% glycerol, pH7.3   |
| Concentration:          | 0.5 mg/ml  |
| Purification:           | Purified from the immunized serum by affinity chromatography (Protein A/G)                     |
| Conjugation:            | Biotin   |
| Storage:                | Store at -20°C as received.  |
| Stability:              | Stable for 12 months from date of receipt.   |
| Predicted Protein Size: | 12.62 kDa  |
| Gene Name:              | C-C motif chemokine ligand 27  |
| Database Link:          | <a href="#">NP_006655</a><br><a href="#">Entrez Gene 10850 Human</a><br><a href="#">Q9Y4X3</a> |

**Background:** This gene is one of several CC cytokine genes clustered on the p-arm of chromosome 9. Cytokines are a family of secreted proteins involved in immunoregulatory and inflammatory processes. The CC cytokines are proteins characterized by two adjacent cysteines. The protein encoded by this gene is chemotactic for skin-associated memory T lymphocytes. This cytokine may also play a role in mediating homing of lymphocytes to cutaneous sites. It specifically binds to chemokine receptor 10 (CCR10). Studies of a similar murine protein indicate that these protein-receptor interactions have a pivotal role in T cell-mediated skin inflammation. [provided by RefSeq, Sep 2014]

**Synonyms:** ALP; CTACK; CTAK; ESKINE; ILC; PESKY; SCYA27

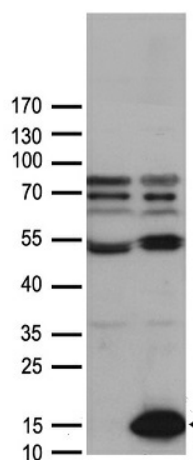


[View online »](#)

Protein Families: Druggable Genome

Protein Pathways: Chemokine signaling pathway, Cytokine-cytokine receptor interaction

### Product images:



HEK293T cells were transfected with the pCMV6-ENTRY control (Cat# [PS100001], Left lane) or pCMV6-ENTRY CCL27 (Cat# [RC221419], Right lane) cDNA for 48 hrs and lysed. Equivalent amounts of cell lysates (5 ug per lane) were separated by SDS-PAGE and immunoblotted with anti-CCL27 antibody (Cat# [TA890017]). Positive lysates [LY416499] (100ug) and [LC416499] (20ug) can be purchased separately from OriGene.