

Product datasheet for **TA890017**

CCL27 Rabbit Polyclonal Antibody

Product data:

Product Type:	Primary Antibodies
Applications:	WB
Recommended Dilution:	WB: 1:500
Reactivity:	Human
Host:	Rabbit
Isotype:	IgG
Clonality:	Polyclonal
Immunogen:	Recombinant protein of human CCL27
Formulation:	PBS with 0.02% sodium azide, 50% glycerol, pH7.3
Concentration:	3.18mg/ml
Purification:	Purified from the immunized serum by affinity chromatography (Protein A/G)
Conjugation:	Unconjugated
Storage:	Store at -20°C as received.
Stability:	Stable for 12 months from date of receipt.
Predicted Protein Size:	12.62 kDa
Gene Name:	C-C motif chemokine ligand 27
Database Link:	NP_006655 Entrez Gene 10850 Human Q9Y4X3
Background:	This gene is one of several CC cytokine genes clustered on the p-arm of chromosome 9. Cytokines are a family of secreted proteins involved in immunoregulatory and inflammatory processes. The CC cytokines are proteins characterized by two adjacent cysteines. The protein encoded by this gene is chemotactic for skin-associated memory T lymphocytes. This cytokine may also play a role in mediating homing of lymphocytes to cutaneous sites. It specifically binds to chemokine receptor 10 (CCR10). Studies of a similar murine protein indicate that these protein-receptor interactions have a pivotal role in T cell-mediated skin inflammation. [provided by RefSeq, Sep 2014]
Synonyms:	ALP; CTACK; CTAK; ESKINE; ILC; PESKY; SCYA27

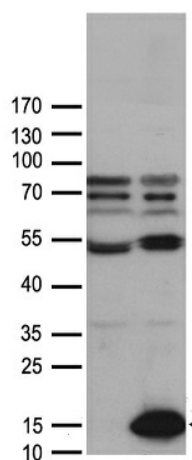


[View online »](#)

Protein Families: Druggable Genome

Protein Pathways: Chemokine signaling pathway, Cytokine-cytokine receptor interaction

Product images:



HEK293T cells were transfected with the pCMV6-ENTRY control (Cat# [PS100001], Left lane) or pCMV6-ENTRY CCL27 (Cat# [RC221419], Right lane) cDNA for 48 hrs and lysed. Equivalent amounts of cell lysates (5 ug per lane) were separated by SDS-PAGE and immunoblotted with anti-CCL27 antibody (Cat# TA890017). Positive lysates [LY416499] (100ug) and [LC416499] (20ug) can be purchased separately from OriGene.