

Product datasheet for **TA890014S**

Calcium Sensing Receptor (CASR) Rabbit Polyclonal Antibody

Product data:

| | |
|-------------------------|---|
| Product Type: | Primary Antibodies |
| Applications: | WB |
| Recommended Dilution: | WB: 1:500 |
| Reactivity: | Human, Mouse, Rat |
| Host: | Rabbit |
| Isotype: | IgG |
| Clonality: | Polyclonal |
| Immunogen: | Recombinant protein of human CASR |
| Formulation: | PBS with 0.02% sodium azide, 50% glycerol, pH7.3 |
| Concentration: | 2.22mg/ml |
| Purification: | Purified from the immunized serum by affinity chromatography (Protein A/G) |
| Conjugation: | Unconjugated |
| Storage: | Store at -20°C as received. |
| Stability: | Stable for 12 months from date of receipt. |
| Predicted Protein Size: | 120.5 kDa |
| Gene Name: | calcium sensing receptor |
| Database Link: | NP_000379 Entrez Gene 12374 MouseEntrez Gene 24247 RatEntrez Gene 846 Human P41180 |

Background: The protein encoded by this gene is a G protein-coupled receptor that is expressed in the parathyroid hormone (PTH)-producing chief cells of the parathyroid gland, and the cells lining the kidney tubule. It senses small changes in circulating calcium concentration and couples this information to intracellular signaling pathways that modify PTH secretion or renal cation handling, thus this protein plays an essential role in maintaining mineral ion homeostasis. Mutations in this gene cause familial hypocalciuric hypercalcemia, familial, isolated hypoparathyroidism, and neonatal severe primary hyperparathyroidism. [provided by RefSeq, Jul 2008]

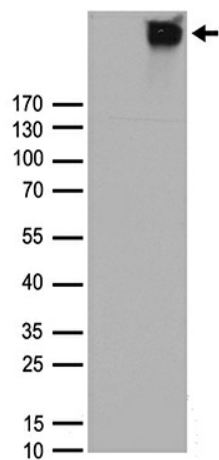
Synonyms: CAR; EIG8; FHH; FIH; GPRC2A; HHC; HHC1; HYPOC1; NSHPT; PCAR1



[View online »](#)

Protein Families: Druggable Genome, GPCR, Transmembrane

Product images:



HEK293T cells were transfected with the pCMV6-ENTRY control (Cat# [PS100001], Left lane) or pCMV6-ENTRY CASR (Cat# [RC211229], Right lane) cDNA for 48 hrs and lysed. Equivalent amounts of cell lysates (5 ug per lane) were separated by SDS-PAGE and immunoblotted with anti-CASR antibody (Cat# [TA890014]). Positive lysates [LY400136] (100ug) and [LC400136] (20ug) can be purchased separately from OriGene.