

## Product datasheet for **TA890014M**

### Calcium Sensing Receptor (CASR) Rabbit Polyclonal Antibody

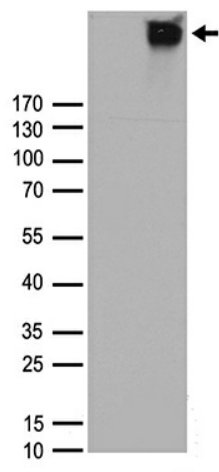
#### Product data:

Product Type:	Primary Antibodies
Applications:	WB
Recommended Dilution:	WB: 1:500
Reactivity:	Human, Mouse, Rat
Host:	Rabbit
Isotype:	IgG
Clonality:	Polyclonal
Immunogen:	Recombinant protein of human CASR
Formulation:	PBS with 0.02% sodium azide, 50% glycerol, pH7.3
Concentration:	2.22mg/ml
Purification:	Purified from the immunized serum by affinity chromatography (Protein A/G)
Conjugation:	Unconjugated
Storage:	Store at -20°C as received.
Stability:	Stable for 12 months from date of receipt.
Predicted Protein Size:	120.5 kDa
Gene Name:	calcium sensing receptor
Database Link:	<a href="#">NP_000379</a> <a href="#">Entrez Gene 12374 Mouse</a> <a href="#">Entrez Gene 24247 Rat</a> <a href="#">Entrez Gene 846 Human</a> <a href="#">P41180</a>
Background:	The protein encoded by this gene is a G protein-coupled receptor that is expressed in the parathyroid hormone (PTH)-producing chief cells of the parathyroid gland, and the cells lining the kidney tubule. It senses small changes in circulating calcium concentration and couples this information to intracellular signaling pathways that modify PTH secretion or renal cation handling, thus this protein plays an essential role in maintaining mineral ion homeostasis. Mutations in this gene cause familial hypocalciuric hypercalcemia, familial, isolated hypoparathyroidism, and neonatal severe primary hyperparathyroidism. [provided by RefSeq, Jul 2008]
Synonyms:	CAR; EIG8; FHH; FIH; GPRC2A; HHC; HHC1; HYPOC1; NSHPT; PCAR1


[View online »](#)

Protein Families: Druggable Genome, GPCR, Transmembrane

## Product images:



HEK293T cells were transfected with the pCMV6-ENTRY control (Cat# [PS100001], Left lane) or pCMV6-ENTRY CASR (Cat# [RC211229], Right lane) cDNA for 48 hrs and lysed. Equivalent amounts of cell lysates (5 ug per lane) were separated by SDS-PAGE and immunoblotted with anti-CASR antibody (Cat# [TA890014]). Positive lysates [LY400136] (100ug) and [LC400136] (20ug) can be purchased separately from OriGene.