

Product datasheet for **TA890009**

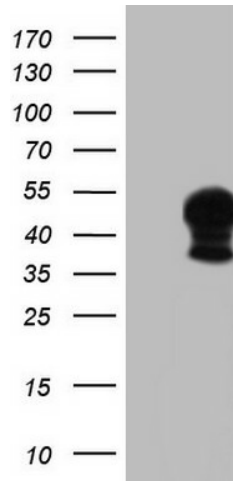
SNX16 Rabbit Polyclonal Antibody

Product data:

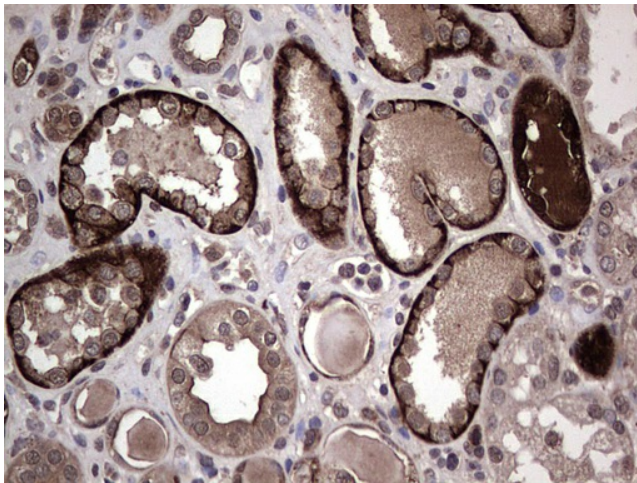
| | |
|-------------------------|---------------------------------------------------------------------------------------------------------------------------------------------------------------------------------------------------------------------------------------------------------------------------------------------------------------------------------------------------------------------------|
| Product Type: | Primary Antibodies |
| Applications: | IHC, WB |
| Recommended Dilution: | WB 1:500, IHC 1:150 |
| Reactivity: | Human |
| Host: | Rabbit |
| Isotype: | IgG |
| Clonality: | Polyclonal |
| Immunogen: | Synthetic peptide conjugated to KLH derived from within residues 70-150 of Human SNX16. |
| Formulation: | PBS (pH 7.3) containing 1% BSA, 50% glycerol and 0.02% sodium azide. |
| Concentration: | 1 mg/ml |
| Purification: | Purified from the immunized serum by affinity chromatography (Protein A/G) |
| Conjugation: | Unconjugated |
| Storage: | Store at -20°C as received. |
| Stability: | Stable for 12 months from date of receipt. |
| Predicted Protein Size: | 39 kDa |
| Gene Name: | sorting nexin 16 |
| Database Link: | NP_690049 Entrez Gene 64089 Human P57768 |
| Background: | This gene encodes a member of the sorting nexin family. Members of this family contain a phox (PX) domain, which is a phosphoinositide binding domain, and are involved in intracellular trafficking. The function of this protein has not been determined. This gene results in three transcript variants encoding two distinct isoforms. [provided by RefSeq, Jul 2008] |
| Synonyms: | DKFZp666H147 |



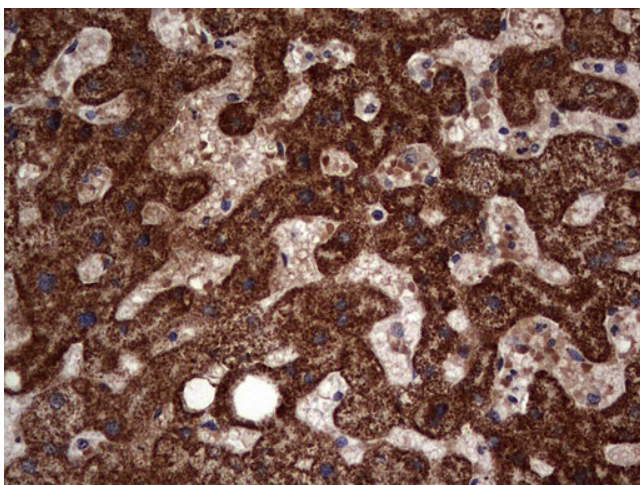
[View online »](#)

Product images:

HEK293T cells were transfected with the pCMV6-ENTRY control (Cat# [PS100001], Left lane) or pCMV6-ENTRY SNX16 (Cat# [RC207476], Right lane) cDNA for 48 hrs and lysed. Equivalent amounts of cell lysates (5 ug per lane) were separated by SDS-PAGE and immunoblotted with anti-SNX16 antibody (Cat# TA890009). Positive lysates [LY403494] (100ug) and [LC403494] (20ug) can be purchased separately from OriGene.



Immunohistochemical staining of paraffin-embedded Human Kidney tissue within the normal limits using Rabbit polyclonal anti-SNX16 antibody at (Heat-induced epitope retrieval by 1mM EDTA in 10mM Tris, pH8.5, 120°C for 3min).



Immunohistochemical staining of paraffin-embedded Human liver tissue within the normal limits using Rabbit polyclonal anti-SNX16 antibody at (Heat-induced epitope retrieval by 1mM EDTA in 10mM Tris, pH8.5, 120°C for 3min).